

# SCOPEPILOT

*The next generation 3D navigation system*





## Explore a new way to navigate

In order to maximize the detection power and optimize the quality indicators in colonoscopy, it is important to improve the examination technique and quality of bowel preparation. In addition advanced imaging technologies should be engaged such as High-Definition endoscopy, digital and optical chromoendoscopy, and navigation solutions like the SCOPEPILOT.

SCOPEPILOT is designed to support an optimal navigation for an efficient, safe and comfortable procedure to improve patient compliance and satisfaction.

## True 3D and responsive representation

SCOPEPILOT NCU-7000 is the next generation Navigation system technology by PENTAX Medical designed to provide a true 3D live representation of the colonoscope shape and position inside the patient's bowel tract.

SCOPEPILOT provides pinpoint navigation and differentiation of the IFT segments for an efficient, safe and comfortable procedure.

With true 3D representation of the endoscope and crisp image quality, SCOPEPILOT supports accurate scope tracking, loop management and caecum intubation rate increasing the patient compliance and level of satisfaction.



1

### True 3D responsive image

True 3D representation of the colonoscope for accurate insertion tracking and effective loop management.

2

### Advanced Orientation

SCOPEPILOT system provides advanced orientation features to support the quality standards in colonoscopy and training.

3

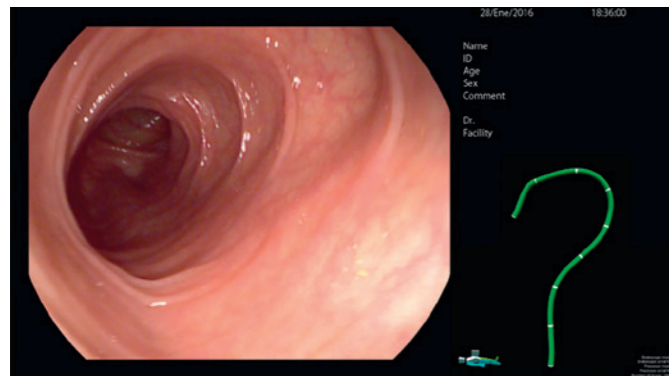
### Comprehensive colonoscopy solution

Perfectly suited to assist with everyday practice, SCOPEPILOT works with other innovative PENTAX Medical technologies to support the whole clinical pathway.

# True 3D responsive image

## True 3D image

- The 3D image is generated by integrated multidimensional sensors which are induced by a magnetic field generated and transmitted to the control unit to be processed and displayed in real time during the procedure.
- The SCOPEPILOT image provides a 3-dimensional image with high depth of field in order to differentiate the loop configuration.
- Real time representation of the scope shape and position for a dynamic trackability and handling control.



SCOPEPILOT allows to view the endoscopic image and the 3D image simultaneously.

## Easy setup

- SCOPEPILOT sensors are integrated in the colonoscope, keeping the working channel free for the advanced therapeutic procedures.
- SCOPEPILOT does not need a dedicated monitor, which makes setting up the system simple and quick and also minimizes the need for extra equipment in the procedure.
- SCOPEPILOT can be activated remotely from the panel or remote control anytime during the procedure.

## Data management flexibility and traceability

- Screenshots can be captured with a single press of a button and be saved to a memory stick.
- Patient data can be stored together with the image capture and saved on memory sticks or the network, making it easier to trace images to patients and reports.



Field generator unit

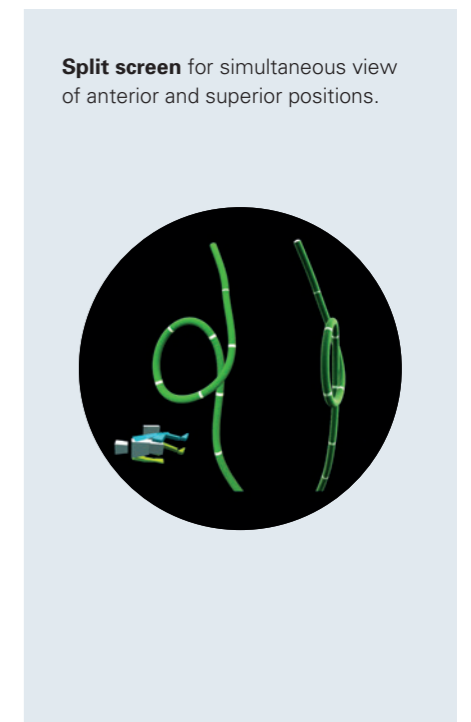
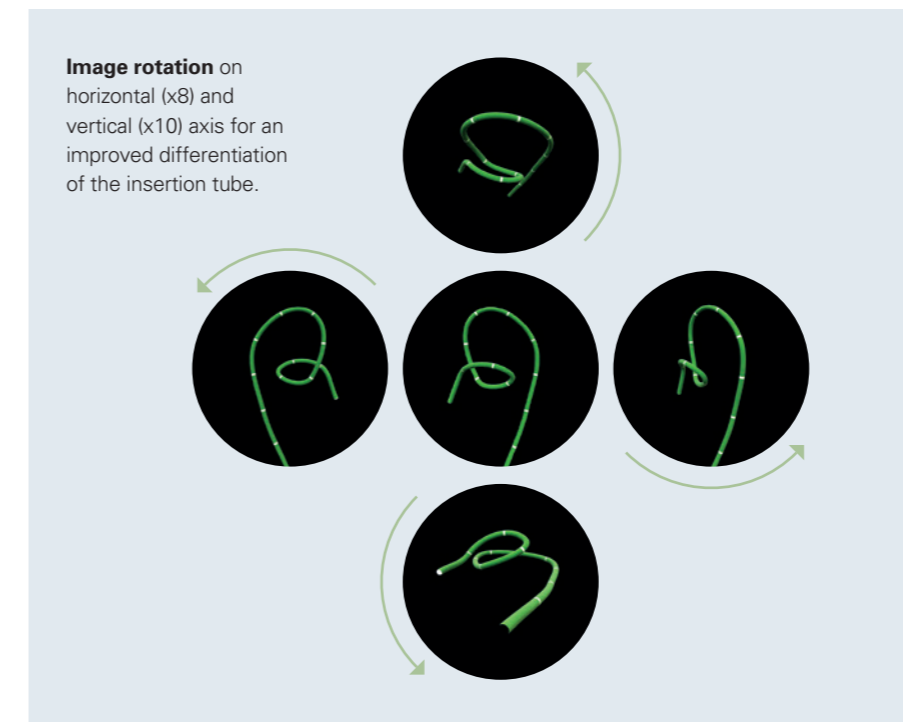


Remote control unit

# Advanced orientation

SCOPEPILOT features different functions to provide the highest quality standards in colonoscopy and training.

- **Image rotation** on horizontal and vertical axis for an improved differentiation of the insertion tube.
- **Split screen** allows simultaneous viewing of the anterior and superior positions to better explain complex anatomies.
- **Zoom-in and zoom-out** functionality for improved loops evaluation, enhanced training and procedure reports that are easily comprehensible.
- The **external position sensor** (EPS) helps to correctly apply abdominal pressure to support and overcome any difficulty during the intubation.
- **Length markers** along the colonoscope help to understand the insertion length and those areas of interest during the procedure.



## Empowered by education

- The SCOPEPILOT system provides advanced orientation features to support the quality standards for training and trainers.
- SCOPEPILOT is part of the Training for Excellence, a wide range of professional education programs, across Europe, Middle East and Africa, spreading best practice endoscopy supported by PENTAX Medical.

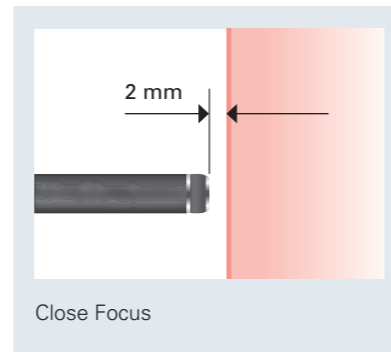
**Learn more** at [www.training-for-excellence.eu](http://www.training-for-excellence.eu) and find detailed information about the program, training courses and registration.

# Comprehensive colonoscopy solution

## Advanced Imaging

The SCOPEPILOT EC38-i10N Video Colonoscope is part of the latest PENTAX Medical HD+ Series.

- The i10 colonoscopes include the next generation megapixel CCD for a crisp, clear and bright HD+ image and together with Close Focus allows for a detailed examination of the mucosa up to 2 mm.
- SCOPEPILOT together with OPTIVISTA – EPK-i7010 Video Processor is the ultimate solution for improved diagnosis, advanced therapeutics and training on a unique platform of optical (i-scan OE) and digital enhancements (i-scan) supporting improved in vivo diagnosis.



Courtesy of Dr. Silvia Sanduleanu, Maastricht UMC+, The Netherlands

Supporting the complete clinical pathway

## The secret behind improved handling

Colonoscopy requires a high degree of skill and precision – not just from the professionals performing the procedure, but also from the devices they use.

PENTAX Medical insertion tube is designed to provide the perfect balance between flexibility and torque response through its proprietary i-FLEX™ and TrueTorque™ technologies.

- PENTAX Medical i-FLEX™ technology provides a graduated flexibility of the insertion tube characteristics for an efficient maneuvering through the tight twists and turns of the sigmoid colon.
- TrueTorque™ provides a higher tactile feel with the endoscopes ensuring a predictable movement to reach the caecum quickly and efficiently.



# SCOPEPILOT works with other innovative PENTAX Medical technologies to support the whole clinical pathway

## Navigation Unit



Navigation Control Unit designed to provide 3D representation of the endoscope shape and position inside the patient's bowel tract during colonoscopies.

## Endoscopes



i10 series: Bigger working channel and Close Focus, all combined in an i10 HD+ endoscope, the high performance endoscopes series, for the day-to-day advanced endoscopy practice.

## HD processors



A complete diagnostic tool, bringing together the best of digital and optical enhancement for complimentary use in pattern and vessel visualization.



A High-Definition video processor offering standard functionality supported by state-of-the-art imaging technology.

## Monitors



The Radiance® Ultra series transform advanced visualization technology capabilities and features into a clinical solution.

Learn more  
www.scopepilot.com



EC	REP
----	-----

**EMEA Headquarter  
Germany**

PENTAX Europe GmbH  
Julius-Vosseler-Straße 104  
22527 Hamburg  
Tel.: +49 40 / 5 61 92 - 0  
Fax: +49 40 / 5 60 42 13  
E-mail: info.emea@pentaxmedical.com

**United Kingdom**

PENTAX U.K. Limited  
PENTAX House  
Heron Drive, Langley  
Slough SL3 8PN  
Tel.: +44 17 53 / 79 27 33  
Fax: +44 17 53 / 79 27 94  
E-mail: medical.uk@pentaxmedical.com

**France**

PENTAX France Life Care S.A.S.  
116 quai de Bezons  
B.P. 204  
95106 ARGENTEUIL CEDEX  
Tel.: +33 1 / 3025 7575  
Fax: +33 1 / 3025 7445  
E-mail: contact.medical@pentax.fr

**Netherlands**

PENTAX Nederland B.V.  
Edisonring 6  
6669NB Dodewaard  
Tel.: +31 88 / 5 30 30 30  
Fax: +31 88 / 5 30 30 40  
E-mail: medical@pentax.nl

**Italy**

PENTAX Italia S.r.l.  
Via Dione Cassio, 15  
20138 Milano  
Tel.: +39 / 02 50 99 58 1  
Fax: +39 / 02 50 99 58 60  
E-mail: marketing.lifecare@pentaxitalia.it

**Spain**

SIMMEDICA – Sistemas Integrales  
de Medicina, S.A.  
Avenida del Sistema Solar 25  
28830 San Fernando de Henares · Madrid  
Tel.: +34 91 / 301 62 40  
Fax: +34 91 / 751 31 15  
E-mail: sim@simmedica.com

**Russia**

Moscow Representative office  
of PENTAX Europe GmbH (Germany)  
1-ya Tverskaya-Yamskaya ulitsa, 25,  
stroenie 1, 6th floor  
125047, Moscow  
Tel.: +7 495 995 10 91  
Fax: +7 495 995 10 91 (fax ext. 234)

**Turkey**

PENTAX Turkey  
Veko Giz Plaza, Meydan Sokak  
No:3/43 343396  
Maslak – Istanbul  
Tel.: +90 212 / 705 05 26  
Fax: +90 212 / 705 05 00

**Japan**

 HOYA Corporation  
6-10-1 Nishi-shinjuku  
Shinjuku-ku  
Tokyo 160-00231