



## Fluoroscans® Insight-FD Mini C-arm System

Redefining Mini C-arm Technology



FLUOROSCAN<sup>®</sup>   
InSight-FD

**HOLOGIC<sup>®</sup>**



# The Next Generation in Mini C-arm Imaging

The Fluoroscanner® Insight-FD mini C-arm system defines the versatility of imaging capabilities needed within your surgical suite, regardless of how challenging the extremity procedure may be. The result: Smart engineering that translates into functionally strong, user-friendly, and time-efficient features.



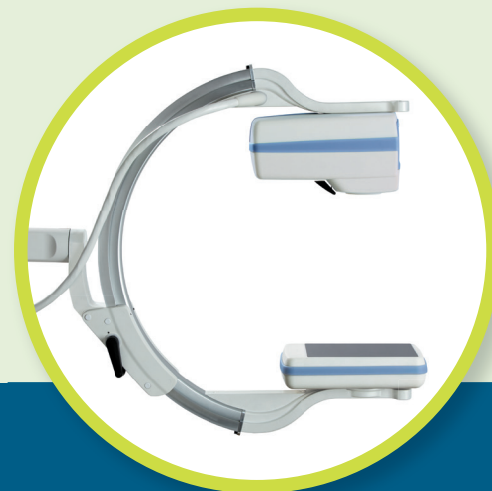
# Performance-driven and State-of-the-art Flat Detector Technology

## Industry performance enhancements include:

- **New flat detector technology**
  - Offers a streamlined thin profile for improved workspace access.
  - Exclusive rotating detector and collimator enhance surgical area positioning.
  - Dual mode flat detector with full field and magnified centered square field of view.
  - High resolution detector offers superb image quality with dose optimization for clear anatomical visualization.
- **New C-arm design for improved ergonomics.**
  - New C-arm designed with forward tube source offers unmatched arch depth for greater flexibility.
  - Full 120° range of motion, both forward and back, provides exceptional maneuverability and flexibility.
  - Flat surface beneath the detector allows for efficient table-top positioning.



**Flat detector rotation is  
an industry exclusive from Hologic.**



20" (50.6 cm) arch depth  
& thin profile for table-top positioning.

FLUOROSCAN<sup>®</sup>  
InSight-FD

EXTREMITY C-ARM IMAGING

# Image Quality to Rival Standard X-ray

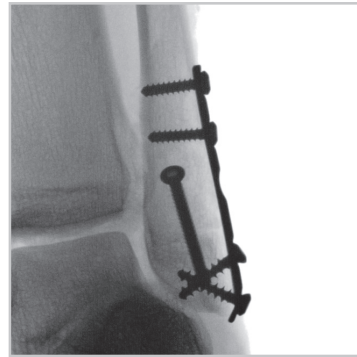
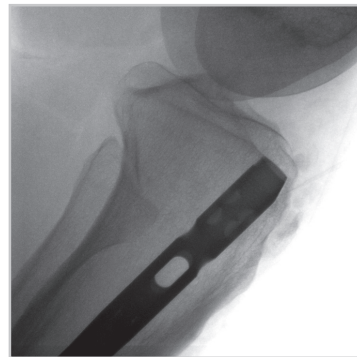
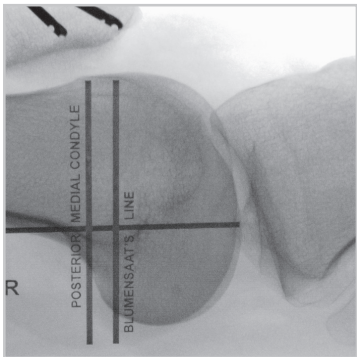
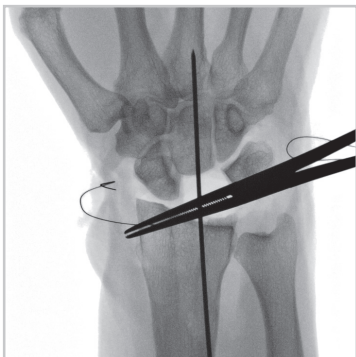
The Fluoroscanner® InSight-FD system's sharp, high quality images allow for instant clinical confidence right in the procedure or operating room. The new flat detector and image processing algorithms deliver superb, distortion-free images and the system's touch-screen controls offer effortless image adjustment and rotation for clear and accurate visualization.



Multi-function  
wireless foot pedal.  
Safe & convenient.



# Image Gallery



# Efficiency Rolled into a **Compact Extremity System**



## **Versatility to perform your extremity procedures**

- HD touch-screen monitor with finger touch rotation and easy to understand command buttons.
- Adjustment-free imaging with automatic exposure as well as motion and metal detection.
- Tilt and swivel capabilities to orient the monitor for best viewing.



## **User-friendly controls right where you need them**

- Convenient handle and tube-head controls for fine tuning when needed.
- Laser alignment light to help guide the imaging to the precise and appropriate location.
- Single press X-ray exposure right at your fingertips.



## **Convenient mobility and flexibility**

- The Fluoroscanner® InSight-FD mini C-arm system is lightweight and can be easily moved from room to room.
- The system folds into a tight mobile package for quick and efficient storage.
- Full range of motion provides improved maneuverability and positioning.



# Fluoroscans® InSight-FD Mini C-arm

## **1 Image quality to rival standard X-ray**

- New image processing algorithms deliver superb distortion-free image quality.
- System allows larger anatomy imaging with dose optimization.
- Automatic imaging with dose optimization for all extremity imaging.

## **2 Better workflow and improved productivity**

- Adjustment-free imaging with automatic motion and metal detection.
- User-friendly sterile field controls to meet surgeon needs.
- Touch-screen interface with easy-to-understand controls; swivel & tilt capable.
- Customizable imaging parameters for surgeon-specific preferences.

## **3 Peripherals and options to support each customer**

- Wireless or wired multi-functional foot pedal.
- Wireless or wired network connectivity.
- DICOM 3.0 compliant (send, store, print & worklist).
- Multiple printer options that neatly fit into the base cabinet.
- USB and DVD export in standard industry formats.

## **4 Hologic offers expertise, stability and long-term investment support**

- Nationwide 24 hour on-site customer support to protect your investment.
- Factory trained support personnel located across the country.
- Scope, stability and backing of a large customer-focused company.



Exclusive rotating detector and user-friendly sterile field controls meet surgeons' needs.



Flat detector sweet spot insures the anatomy of interest is always within the field of view.

**Hologic is committed to addressing the continuum  
of skeletal health care, from the OR to in-office imaging.**

Just as we are leading the way in women's health imaging  
solutions, we are raising the bar in skeletal health imaging.

EXTREMITY MRI | EXTREMITY C-ARM IMAGING | BONE HEALTH

**HOLOGIC®**

[www.hologic.com](http://www.hologic.com) | [info@hologic.com](mailto:info@hologic.com) | +1.781.999.7300 | [www.fluoroscan.com](http://www.fluoroscan.com)

**North America / Latin America**

35 Crosby Drive  
Bedford, MA 01730-1401  
USA

**Europe**

Everest (Cross Point)  
Leuvensesteenweg 250A  
1800 Vilvoorde  
Belgium

**Asia Pacific**

7th Floor, Biotech Centre 2  
No. 11 Science Park West Avenue  
Hong Kong Science Park  
Shatin, New Territories  
Hong Kong

**Australia / New Zealand**

Suite 402, Level 4  
2 Lyon Park Road  
Macquarie Park NSW 2113  
Australia

PB-00212 US/International (03/13) © Hologic 2013. All rights reserved. Printed in USA. Specifications are subject to change without prior notice. Hologic, Fluoroscan, and associated logos are trademarks and/or registered trademarks of Hologic, Inc. and/or its subsidiaries in the United States and/or other countries. This information is intended for medical professionals in the U.S. and other markets and is not intended as a product solicitation or promotion where such activities are prohibited. Because Hologic materials are distributed through websites, eBroadcasts and tradeshow, it is not always possible to control where such materials appear. For specific information on what products are available for sale in a particular country, please contact your local Hologic representative or write to [fluoroscan@hologic.com](mailto:fluoroscan@hologic.com).