

FUJIFILM
Value from Innovation

SonoSite SII



Gen MB

- Transducer
- Patient
- Annotate
- Settings

Nrv
HFL
0.7
TIS
0.1
144

1.8

144 <>>

Calipers Calcs Zoom

Two large rotary knobs and a play button.

Buttons labeled M, C, and 2D.

EMPOWERING
EFFICIENCY.

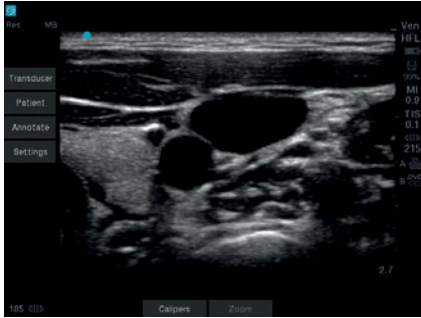


TRANSFORMING THE
PACE OF YOUR PRACTICE,
THROUGH SIMPLY,
SMART ULTRASOUND.

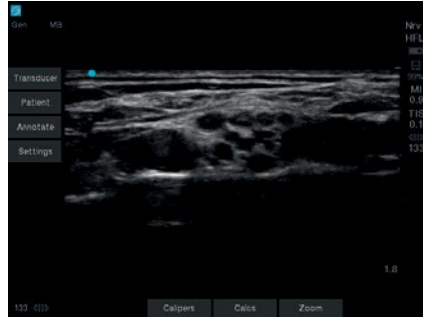
The SII empowers your efficiency through an intuitive, yet smart user interface that adapts to your imaging needs. The system is portable and can be used across multiple hospital environments, including a zero footprint option for space-constrained rooms. We listened to you and designed the SII system to maximize the productivity of your practice, and support you in providing simply the best patient care.

5

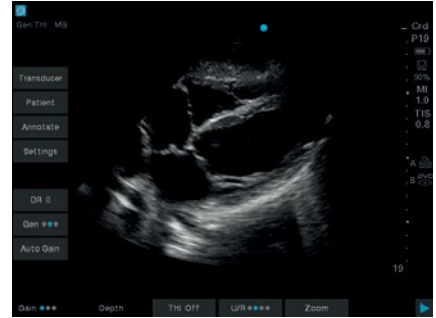
TECHNOLOGY DRIVEN
5-YEAR STANDARD WARRANTY
WARRANTY



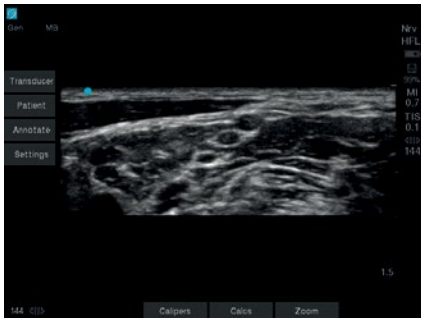
HFL38xi – Internal Jugular Vein



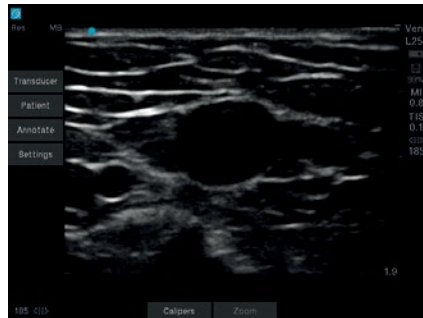
HFL38xi – Supraclavicular



rP19x – Subcostal Cardiac



HFL38xi – Interscalene



L25x – Basilic Vein



rC60xi – Portal Vein

VISUALIZATION, CLEARLY ENHANCED.

ELEVATED COLOR SENSITIVITY

Through a dual flex and thin lens design, combined with new advancements in image optimization, the HFL38xi was engineered for increased penetration, clarity, and color sensitivity. You can now better visualize nerves and vessels, whether it be for procedural guidance or flow analysis.

OPTIMIZED IMAGING EXPERIENCE

DirectClear Technology is a novel, patent-pending process that elevates transducer performance:

- Improved penetration and contrast resolution: Unlike conventional SonoSite transducers, a more efficient material has been embedded into the design that allows for the generation of more acoustic signal. In parallel, a reflective layer has been added to reduce the loss of this signal, as it is transmitted into the patient.
- Sharpened detail resolution: An additional layer has been added to provide a better acoustic match between the transducer and the patient, increasing the ability to resolve small structures and aid in your diagnostic confidence.

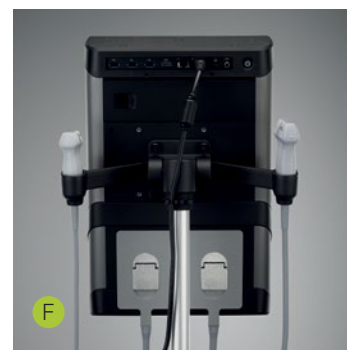
SonoSite S11

INTELLIGENCE,
INSPIRED BY YOU.

- A Touchscreen menu automatically adapts to your needs
- B Tactile knobs for gain and depth control
- C Virtual track pad displays only when needed
- D Flexible control of caliper, zoom, and color box through virtual track pad or touchscreen
- E Easy access to commonly used controls (Mode, Print, Save)
- F Embedded Dual Transducer Connector. Switch exam types or transducers with two taps on the screen

WORKFLOW EXTENDED,
FROM SYSTEM TO STAND.

- G Lockable drawer with tray behind system
- H Dedicated gel bottle holder
- I Elevated transducer holders
- J Large storage basket



SONOSITE SII TRANSDUCERS



L38xi ●●

10-5 MHz Linear

Applications:

lung, nerve, small parts, arterial, venous

Scan depth: 9 cm



HFL38xi ●

13-6 MHz Linear

Applications:

breast, lung, musculoskeletal, nerve, ophthalmic, small parts, arterial, venous

Scan depth: 6 cm



HFL50x ●

15-6 MHz Linear

Applications:

breast, musculoskeletal, nerve, small parts

Scan depth: 6 cm



L25x ●●

13-6 MHz Linear

Applications:

lung, musculoskeletal, nerve, superficial, arterial, venous, ophthalmic

Scan depth: 6 cm



C11x

8-5 MHz Curved

Applications:

abdominal, neonatal, nerve, venous, arterial, cardiology (vet)

Scan depth: 13.5 cm



rC60xi ●●●●

5-2 MHz Curved

Applications:

abdominal, musculoskeletal, nerve, ob, gyn

Scan depth: 30 cm



ICTx ●

8-5 MHz Curved

Applications:

ob, gyn

Scan depth: 13 cm



rP19x ●●

5-1 MHz Phased

Applications:

abdominal, cardiology, lung, ob

Scan depth: 35 cm



P10x ●

8-4 MHz Phased

Applications:

ped. abdominal, ped. cardiology, neonatal head

Scan depth: 14 cm



HSL25x

13-6 MHz Linear

Applications:

lung, musculoskeletal, nerve, superficial, arterial, venous, ophthalmic

Scan depth: 6 cm



L52x (Vet) ●

10-5 MHz Linear

Applications:

musculoskeletal, ob, arterial

Scan depth: 15 cm



C35x ●

8-5 MHz Curved

Applications:

abdominal, musculoskeletal, nerve, ob, spine

Scan depth: 15 cm



C8x ●

8-5 MHz Curved

Applications:

prostate, transrectal

Scan depth: 11.5 cm



P11x

10-5 MHz Phased

Applications:

venous, vascular

Scan depth: 12 cm

- DirectClear Technology.
- Optional Armored Cable.
- Needle guides and kits available.
- A transverse needle guide available.

SYSTEM SPECIFICATIONS

System weight	12.6 lbs./5.70 kg with battery
Dimensions	17.6" x 11.5" x 4.8" / 44.7 cm x 29.3 cm x 12.3 cm
Display	12.1"/30.7 cm diagonal LCD (NTSC or PAL) with chemically- etched glass layer
Viewing Angles:	85° up/down/left/right
Architecture	All-digital broadband
Dynamic range	Up to 165 dB
Gray scale	256 shades
HIPAA compliance	Comprehensive tool set

MOUNTING OPTIONS

Video Electronics Standards Association (VESA™)
Mounting: (2.9" x 2.9" / 75mm x 75mm) and
(3.9" x 3.9" / 100mm x 100mm)

IMAGING MODES

2D / Tissue Harmonic Imaging / M-Mode
Velocity Color Doppler / Color Power Doppler

IMAGE PROCESSING

SonoADAPT™ Tissue Optimization
SonoHD2™ Imaging Technology
Dual Imaging, Duplex Imaging, 2x pan/zoom
capability, Dynamic range and gain
ColorHD™ Technology

STEEP NEEDLE PROFILING

C35x – Nerve, MSK, Spine
HFL38xi – Nerve, MSK, Breast, Small Parts,
Arterial, Venous
HFL50x – Nerve, MSK, Breast, Small Parts
L25x – Nerve, MSK, Arterial, Venous
HSL25x – Nerve, MSK, Arterial, Venous
L38xi – Nerve
rC60xi – Nerve, MSK

USER INTERFACE

Gain control through tactile knob: overall, near, far
Depth control via tactile knob
Adaptive touchscreen display with menus optimized
for current system state
Easy access to commonly used controls on capacitive
touch pad. (Scan/Freeze, Modes, Print, Save Clip,
Save Image)
Touchscreen manipulation for Calipers, Zoom and
Color Box (Virtual track pad also available)

TRANSDUCERS

Broadband/Multifrequency:

DirectClear Technology (rP19x, rC60xi)
Armored Cable Technology (optional on L38xi, L52x,
rP19x, rC60xi)
Linear Array, Curved Array, Phased Array,
Micro-Convex
Center line marker for linear transducers
Exam types: abdominal, breast, cardiology, gyn,
lung, musculoskeletal, neonatal, nerve, ob, ophthalmic,
small parts, spine, superficial, arterial, venous
Embedded Dual Transducer Connector with 2-tap
transducer switching function

DURABILITY

Drop-tested at 3 feet/91.4 cm

APPLICATION SPECIFIC CALCULATIONS

OB/Gyn/Fertility: Diameter/ellipse measurements,
volume, ten follicle measurements, estimated fetal
weight, established due date, gestational age, last
menstrual period, multiple user-selectable authors,
ratios, amniotic fluid index, patient report, humerus
and tibia measurement and charts

Arterial: Diameter/ellipse/trace measurements,
volume, percent diameter and area reduction,
patient report

Cardiac: Ejection fraction, volume measurements,
Simpson's rule, IVC Collapse Ratio, LA/RA Volume,
TAPSE, Ability to view EF and FS simultaneously

ONBOARD IMAGE AND CLIP

STORAGE/REVIEW

16 GB internal flash memory storage capability
Storage support for up to 500 patients
Clip Store capability (maximum single clip length:
60 seconds)
Start/Stop toggle capability for clips
USB Auto Export
Encryption of patient data on system
Cine review up to 255 frame-by-frame images

MEASUREMENT TOOLS, PICTOGRAMS AND ANNOTATIONS

2D: Distance calipers, ellipse and manual trace

M-Mode: Distance and time measurements,
heart rate calculation

User-selectable text and pictograms

User-defined, application-specific annotations

Biopsy guidelines

CONNECTIVITY (EXTERNAL DATA MANAGEMENT)

SonoSite Patient Data Archival Software (PDAS) for
Wireless/Wired Image, Report Management
Q-path ultrasound management system
DICOM® Image Management (TCP/IP): Print and
Store, Modality Work List, Storage Commit: Modality,
Perform, Procedure Step
Direct writing capability to USB 2.0 mass storage
removable media (PC and MAC compatible)
Supported export formats: MPEG-4 (H.264), JPEG,
BMP, and HTML

CONNECTIVITY (SYSTEM PORTS)

HDMI output to external display
Composite video output (NTSC/PAL) to VCR or video
printer
Audio output
Integrated speakers
Ethernet or wireless image/data transfer
USB ports (3)

POWER SUPPLY

System operates via battery or AC power
Rechargeable lithium-ion battery
AC: universal power adapter, 100-240 VAC,
50/60 Hz input, 15 VDC output
Less than 25 sec. from power-on to scanning

SII STAND AND PERIPHERALS

Hydraulic height adjustment, shelf for printer
Elevated transducer holders
Dedicated gel holder
Tray with drawer on back of system
Large basket with easy removal feature for cleaning
(optional 2nd basket)
AC Cord Retainer
Cable management hooks for auxiliary cables
Optional PowerPark and PowerPack

OPTIONAL PERIPHERALS

Printers: Medical-grade black and white

External data input devices: Bar code reader

Bluetooth is a registered trademark of Bluetooth SIG, Inc.

Mac is a trademark of Apple Inc., registered in the U.S. and other countries.

DICOM is the registered trademark of the National Electrical Manufacturers
Association for its standards publications relating to digital communications
of medical information.

FUJIFILM
Value from Innovation

FUJIFILM SonoSite, Inc.
Worldwide Headquarters
21919 30th Drive SE, Bothell, WA 98021-3904
Tel: +1 (425) 951-1200 or +1 (877) 657-8050
Fax: +1 (425) 951-6800
www.sonosite.com/products/sii

SonoSite Worldwide Offices
FUJIFILM SonoSite Australasia Pty Ltd: Australia 1300-663-516
FUJIFILM SonoSite Australasia Pty Ltd: New Zealand 0800-888-204
FUJIFILM SonoSite Brazil +55 11-5574-7747
FUJIFILM SonoSite Canada Inc. +1 888-554-5502
FUJIFILM (China) Investment Co., Ltd +86 21-5010-6000
FUJIFILM SonoSite GmbH – Germany +49 69-80-88-40-30
FUJIFILM SonoSite, Inc. – USA +1 425-951-1200

FUJIFILM SonoSite India Pvt Ltd. +91 124-288-1100
FUJIFILM SonoSite Italy S.r.l. +39 02-9475-3655
FUJIFILM SonoSite Iberica SL – Spain +34 91-123-84-51
FUJIFILM SonoSite Japan K.K. +81 3-0418-7190
FUJIFILM SonoSite Korea Ltd +65 6380-5589
FUJIFILM SonoSite Ltd – United Kingdom +44 1462-341151
FUJIFILM SonoSite SARL – France +33 1-82-88-07-02