

PC-SPIROMETRY

Standalone or with Diagnostic System



Pulmonary Function Testing has never been easier with SCHILLER's latest technology in PC-Spirometry. Our Windows based program can be used either as a standalone PC-Spirometry System on a Laptop or in combination with the CARDIOVIT AT-104 PC Diagnostic System.

Sensors SP-250/260

Both Pneumotacho Sensors distinguish themselves through their easy handling. They are ergonomically shaped, pleasantly lightweight and thereby comfortable to hold. The SP-250 has a disposable sensor, which is replaced after each use. This ensures hygienically impeccable work and increases the efficiency as the sensor does not need to be disinfected between use, making the system available any time. The disposable sensors are all tested for minimum tolerance and thereby warrant an absolutely exact measurement. The SP-260 allows the same accuracy as the SP-250, but with a reusable sensor. The sensor's inner tube can be removed and can easily be cleaned using a common disinfectant. In this sensor it is only necessary to replace the small measurement filter and the cardboard mouthpiece. This reduces material cost - ideal if there are only a few measurements carried out each day.



Easy operation

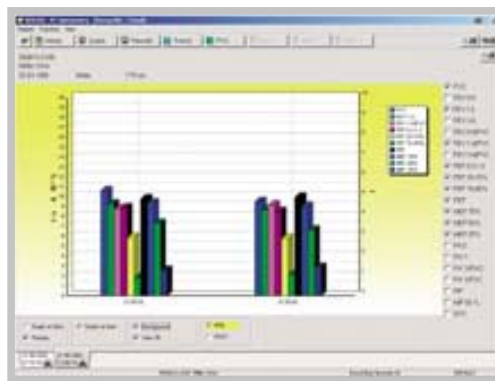
One button push starts the tests. Our program is Windows based and therefore very user-friendly designed. Tests can be carried as many times as desired with the results clearly displayed on the screen. The flow/volume, the volume/time and the flow loop trace is shown in real time and in color. Calibration takes normally less than a minute!

Storage and printing

Pulmonary function data is saved using the on-board Data Management SEMA-200; all previous examinations are easily accessed and viewed on the screen. Clean, clear, ready-to-file reports are printed on a laser or color ink-jet printer in seconds.

Interpretation/Diagnosis

The software gives diagnosis indications when requested. You can select firm terminology from a data base and extend it with your own text. In addition, our "Interpretation Quadrant", which differentiates between "Normal", "Obstructive", "Restrictive" or "Combined", complements the diagnostic information.



Long-Term Comparisons/Trends

When a series of recordings from one patient is available, trend traces can be shown. You select, which of 24 different measurement values should be compared and view them in order.

Comprehensive Pulmonary Function Testing

Four measurement programs for inspiratory and expiratory tests are available: FVC, SVC, MVV and MV, with nominal/actual differences calculated automatically and pre/post medication comparisons to aid diagnostics.



SCHILLER

www.schiller.ch

		PRE						POST					
		Flow	Vol	Flow	Vol	Flow	Vol	Flow	Vol	Flow	Vol	Flow	Vol
<input checked="" type="checkbox"/>	FVC	5.02	4.75	95	4.75	0.00	0.00	4.52	95	4.52	0.00	0.00	0.00
<input checked="" type="checkbox"/>	FEV0.5	0.00	3.45	3.45	0.00	0.00	3.43	3.43	0.00	0.00	0.00	0.00	0.00
<input checked="" type="checkbox"/>	FEV1.0	4.16	4.35	104	4.35	0.00	0.00	4.35	105	4.35	0.00	0.00	0.00
<input checked="" type="checkbox"/>	FEV1.5	0.00	0.00	0.00	0.00	0.00	4.52	4.52	0.00	0.00	0.00	0.00	0.00
<input checked="" type="checkbox"/>	FEV3.0/FVC	0.00	73	73	0	0	70	70	0	0	0	0	4
<input checked="" type="checkbox"/>	FEV1.0/FVC	81	92	113	92	0	0	89	115	89	0	0	3
<input checked="" type="checkbox"/>	FEV3.0/FVC	0	0	0	0	0	100	100	0	0	0	0	0
<input checked="" type="checkbox"/>	PEF 0.2-1.2	0.00	8.40	8.40	0.00	0.00	8.90	8.90	0.00	0.00	0.00	0.00	5
<input checked="" type="checkbox"/>	PEF 25-75%	4.62	5.76	125	5.76	0.00	0.00	5.36	116	5.36	0.00	0.00	0.00

Measurement table

ASIA

SCHILLER Asia Pacific

10 C Jalan SS 3/33
Taman Universiti
47300 Petaling Jaya
Selangor, Malaysia
Phone +603 7877 5336
Fax +603 7877 5744
e-mail: schiller@top.net.my

AUSTRIA

SCHILLER Handelsges. m.b.H.

Kampmüllerweg 24
A-4044 Linz
Phone +43 732 709 90
Fax +43 732 757 000
e-mail: sales@schiller.at

C. I. S

ZAO SCHILLER RU

Pokrovsky Blvd. House 3
Block 1, Office 2202
P.O. Box 27
109028 Moscow, Russia
Phone +7095 956 29 10
Fax +7095 956 18 63
e-mail: service@schiller.ru

FRANCE

SCHILLER MEDICAL SA

4, rue Louis Pasteur
F-67162 Wissembourg
Phone +33 3 88 63 36 00
Fax +33 3 88 94 12 82
e-mail: info@schiller.fr

GERMANY

Schiller Medizintechnik GmbH

Rudolf-Diesel-Strasse 14
D-85521 Otterbrunn
Phone +49 89 629 9810
Fax +49 89 609 5090
e-mail: info@schillermed.de

INDIA

SCHILLER Healthcare

India Pvt. Ltd.
D. C. Silk Mills Compound
'A' Wing, 1st Floor
5, Chunawala Estate
Kondivitta Lane
Andheri - Kurla Road, Andheri (E)
Mumbai - 400 059, India
Phone +91 22 826 35 20
Fax +91 22 826 35 25
e-mail: schiller@vsnl.com

SPAIN

SCHILLER ESPAÑA, S.A.

Avenida Baviera, 12-14 Posterior
E- 28028 Madrid
Phone +34 91 713 01 76
Fax +34 91 355 79 33
e-mail: schiller@schiller-es.com

SWITZERLAND

SCHILLER-Reomed AG

Riedstrasse 14
CH-8953 Dietikon
Phone +41 1 744 30 00
Fax +41 1 740 37 10
e-mail: sales@schiller-reomed.ch

TURKEY

SCHILLER TÜRKİYE

Halil Rifat Paşa Mah.
Darülaceze Cadd.
Perpa Ticaret Merkezi
B/Blok No:69 K:2
Okmeydanı-Sisli - İstanbul
Türkiye
Phone +90 212 210 86 81 (pbx)
Fax +90 212 210 86 84
e-mail: sales@schiller-turkiye.com

USA

SCHILLER America Inc.

11300 NW 41st Street
Miami
Florida 33178, USA
Phone +1 786 845 06 20
Fax +1 786 845 06 02
e-mail: sales@schilleramerica.com

Technical Data PC-Spirometry:

System: According to CARDIOVIT AT-104 PC

Conformity: CE according to 93/42/EEC

Measured Values:

FVC: FVC, FEV_{0.5}, FEV_{1.0}, FEV_{3.0}, FEV_{0.5}/FVC, FEV_{1.0}/FVC, FEV_{3.0}/FVC, FEF_{0.2-1.2}, FEF_{25-75%}, FEF_{75-85%}, PEF, MEF_{75%}, MEF_{50%}, MEF_{25%}, FIVC, FIV_{1.0}, FIV_{1.0}/FIVC, FIV_{1.0}/FVC, PIF, MIF_{50%}

SVC: SVC, ERV, IRV, TV

MV: MV, RR, TV

MVV: MVV, RR, TV

Presentation:

- Flow/volume graph
- Volume/time graph
- Flow loop
- Measurement values table
- Measurement values table
- Trend display at >1 recording per patient
- Interpretation quadrant

Prediction Equation:

- **Adults:** ECCS, Austria, Crapo, Morris, Knudson, Knudson 76, Polgar, Berglund, Finland, India, Composite
- **Children:** Quanier & Tammeling, Austria, India, Knudson, Knudson 76, Polgar
- **Extrapolated predicted values**
- **Comparison pre/post medication possible**

Standards Compliance: ATS, OSHA, NIOSH

SPIROVIT SP-250 Pneumatacho Flowsensor for Pulmonary Function Testing with disposable Sensors:

Dimensions SP-250:

118x36x28 mm, approx. 120 g; 4.6x1.4x1.1 in., approx. 0.26 lbs

Measuring Method: Pneumatometer

Measuring Accuracy: According ATS < 3%

Flow Impedance: <0.2 mbar *s/l at 12 l/s

SPIROVIT SP-260 Pneumatacho Flowsensor for Pulmonary Function Testing with reusable Sensor:

Dimensions SP-260:

125x36x28 mm, approx. 160 g; 4.9x1.4x1.1 in., approx. 0.34 lbs

Measuring Method, Measuring Ranges, Measuring Accuracy, Flow Impedance same as SP-250

Basic Unit:

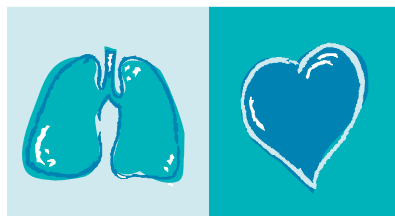
- PC-Spirometry program with four inspiratory and expiratory pulmonary function tests
- 1 pneumotach sensor (choice of SP-250 disposable or SP-260 reusable sensor)
- Accessories: 2 noseclips and either 1 pack of disposable plastic mouthpieces (for SP-250) or 1 pack of disposable filters (for SP-260)
- SCHILLER Software CD ROM
- Interface adapter PC Spirometry
- 1 operating manual

Option: Calibration syringe

PC Requirements:

- Pentium II
- RS-232 Interface for Sensor
- Windows 98, NT or 2000

Technical Data are subject to change without notice.



SCHILLER

www.schiller.ch

The Art of Diagnostics