

BROADEN YOUR PERSPECTIVE

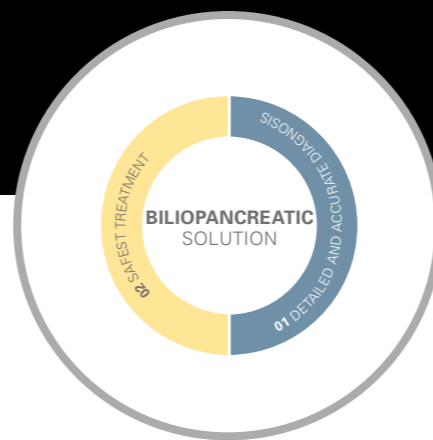
*The new way of doing. The new way of seeing.
The new way of treating. Explore the EUS-J10 line-up.*



In association with
HITACHI
Inspire the Next



EUS-J10 line-up



Clinical Solution



Triple Aim

Broaden your perspective.
Explore the EUS-J10 line-up.

PENTAX
MEDICAL

The new way of doing. The new way of seeing. The new way of treating.

The EUS-J10 line-up is designed for **optimized procedural efficiency** during diagnostic EUS, EUS-FNA/FNB, and therapy.



EG36-J10UR



EG34-J10U



EG38-J10UT



PENTAX Medical and Hitachi: Leveraging strong synergies for the best clinical outcomes




Broaden your perspective. Explore the EUS-J10 line-up.



PENTAX Medical always has Triple Aim in mind when providing solutions to you, in order to support your goals of improving clinical outcomes, improving healthcare productivity and enhancing provider and patient experience.


Optimize access

Increased maneuverability and improved ergonomics ensure superb stability and ease of intubation for higher procedural success rates, optimized working comfort, and better patient tolerance. *The new way of doing.*

Click for more information 


Enrich diagnostic findings

Greater detail, better delineation, and superior penetration: a proven PENTAX-Hitachi image quality enhanced to provide improved diagnostic outcomes, and guidance on therapy. *The new way of seeing.*

Click for more information 

Redefine therapy

A unique, enlarged 4.0 mm working channel expands therapeutic capabilities to advance EUS-guided intervention while providing full control of the procedure. *The new way of treating patients.*

Click for more information 



Optimize access.
The new way of doing.

Higher procedural success rates, optimized working comfort, and better patient tolerance through increased maneuverability:



Powerful tip angulation

Smaller bending radius

Shorter rigid distal portion lengths



Optimize access. The new way of doing.

PENTAX
MEDICAL

Higher procedural success rates, optimized working comfort, and better patient tolerance through improved ergonomics and lightweight control body:

Ergonomically designed control knobs

One umbilical cable to reduce stress injury and keep better balance

New braking mechanism for better device control

Air/water nozzle to maintain good endoscopic view

Newly designed for optimized handling:
- Air/water/balloon feeding valve OF-B207
- Suction/balloon suction control valve OF-B206

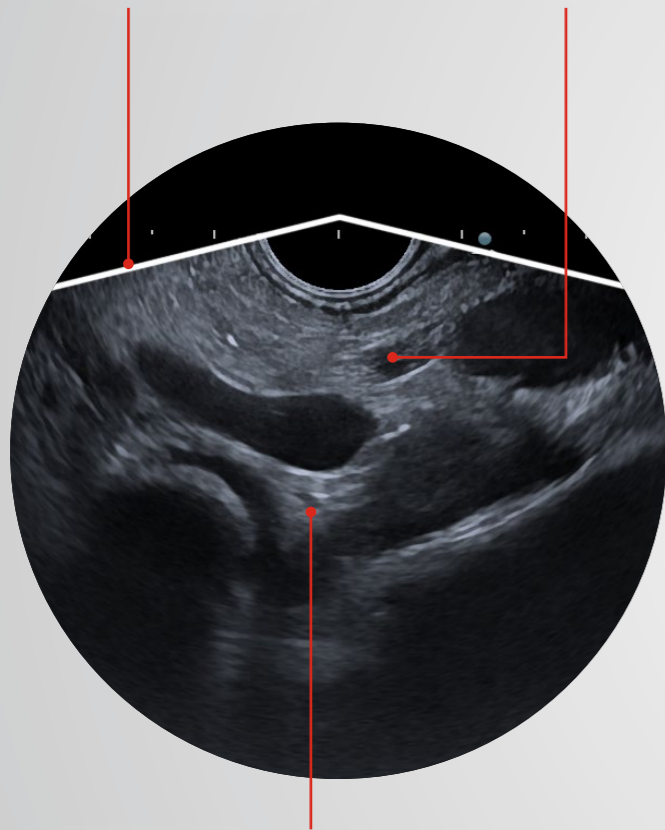


Enrich diagnostic findings. The new way of seeing.

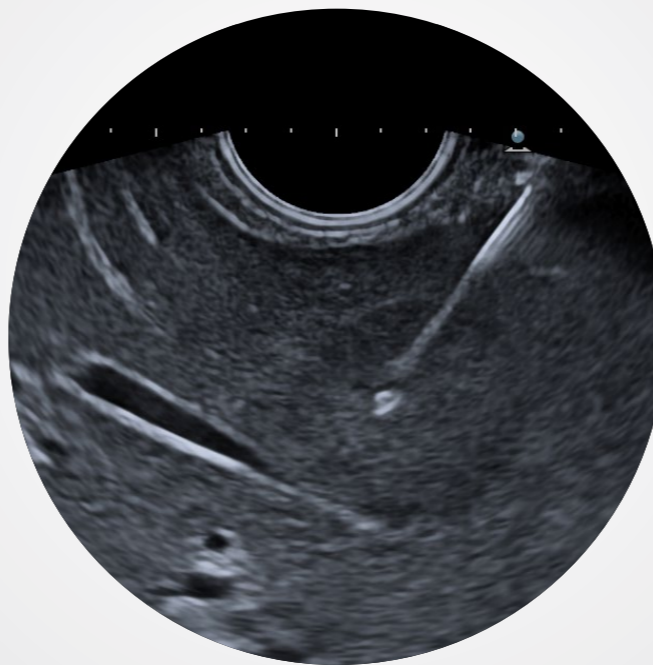
Improved diagnostic outcomes, and guidance on therapy thanks to greater detail, better delineation and superior penetration:

150° scan angle

13MHz frequency

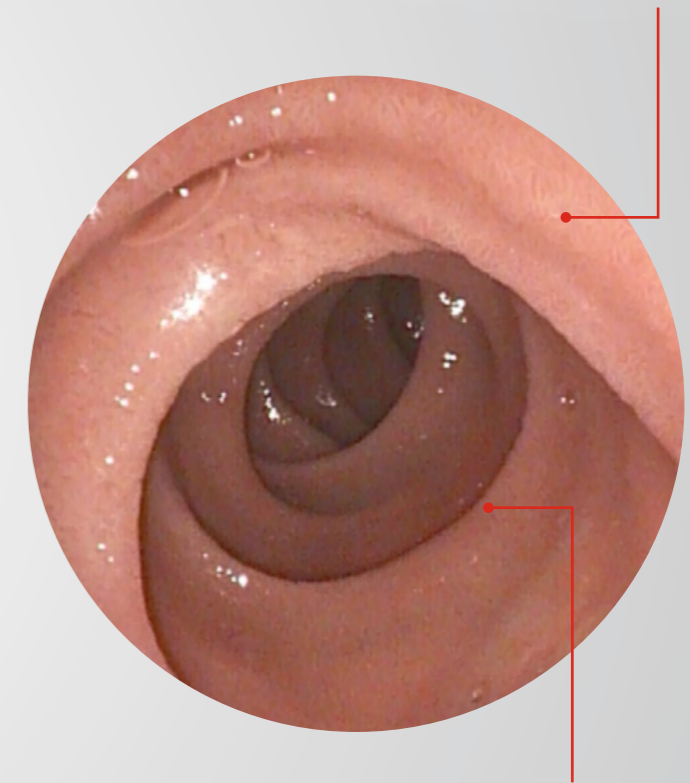


Improved spatial and contrast resolution together with depth penetration due to the the latest Hitachi ultrasound probe crystal technology



EUS-FNA/FNB with clear needle visibility

3mm near field of view



Improved resolution due to new image sensor



Enrich diagnostic findings.
The new way of seeing.

Improved diagnostic outcomes and guidance on therapy thanks to greater detail, better delineation and superior penetration:



Broadband Harmonic Imaging

*(High-Definition dynamic
Tissue Harmonic Imaging)*

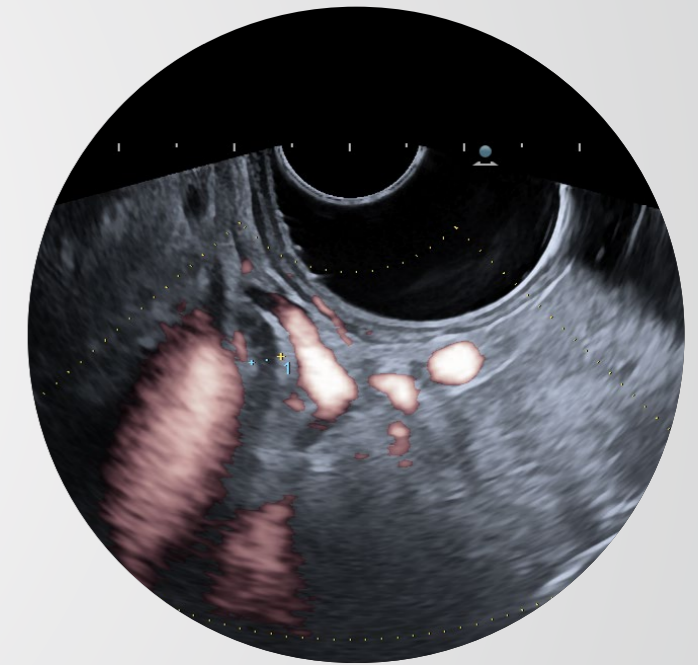
Optimal tissue differentiation
with clear delineation of boundaries



Compound Imaging

*(Real-time spatial and frequency image
compounding)*

Improves image resolution with clear
visualization of irregular borders, calcifi-
cations and enhanced needle visibility



eFLOW/Fine Flow

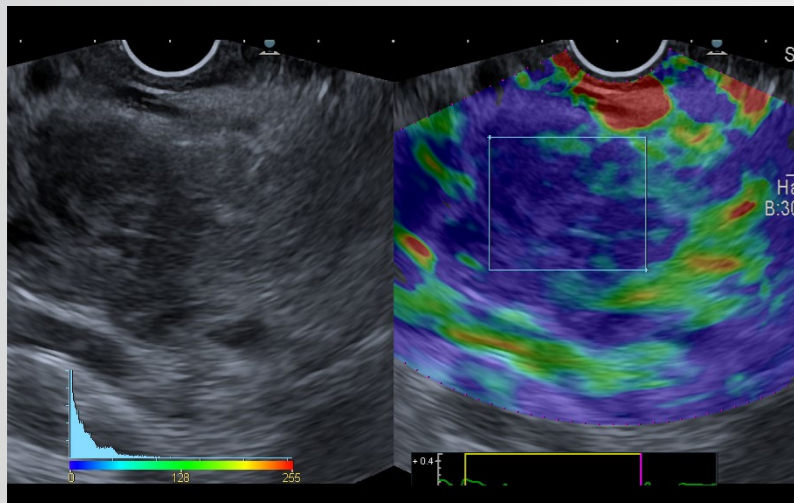
*(High-Resolution Flow
Mapping Technology)*

Accurately depicts blood flow
dynamics, and helps vessel depiction
during challenging EUS-FNA/FNB



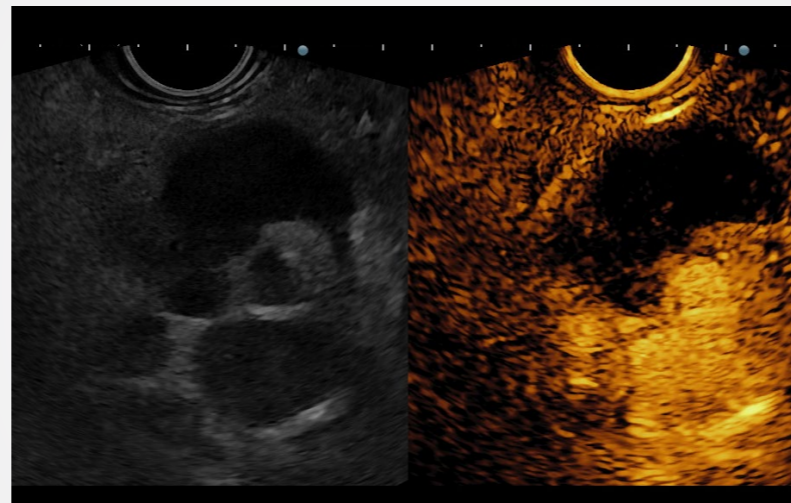
Enrich diagnostic findings. **The new way of seeing.**

Improved diagnostic outcomes and guidance on therapy thanks to greater detail, better delineation and superior penetration:



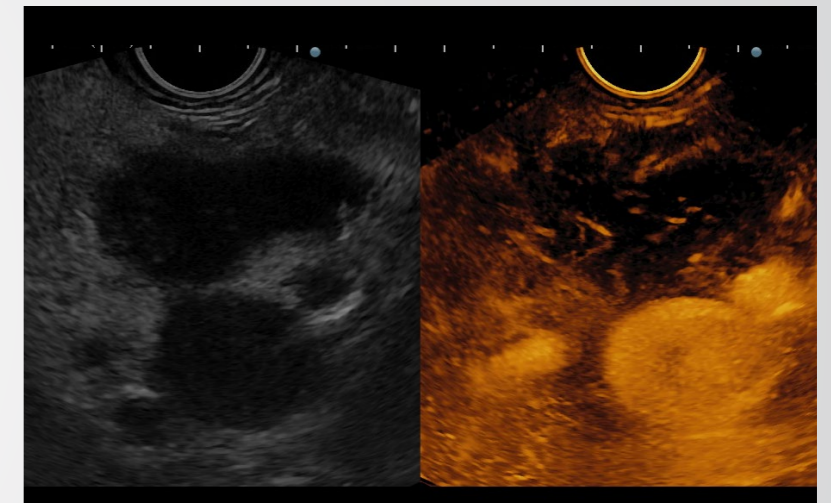
Elastography (RTE)
(Hitachi Real-Time Tissue Elastography)

Aids characterization of focal lesions, lymph nodes, and improves targeting for EUS-FNA/FNB



Contrast Harmonic Imaging (CHI)
(Real-time display of Contrast Harmonic Imaging)

CHI aids for differential diagnosis of focal lesions (cystic or solid lesions, particularly pancreatic) and monitoring of treatment response



Contrast Harmonic Imaging (CHI)
(Real-time display of Contrast Harmonic Imaging)

Accumulation mode, within CHI, provides information of the target's vascular supply or parenchymal perfusion pattern and enables accurate lesion characterization



Redefine therapy. The new way of treating.

Expanding therapeutic capabilities by enlarged 4.0 mm working channel to advance EUS-guided intervention while providing full control of the procedure:

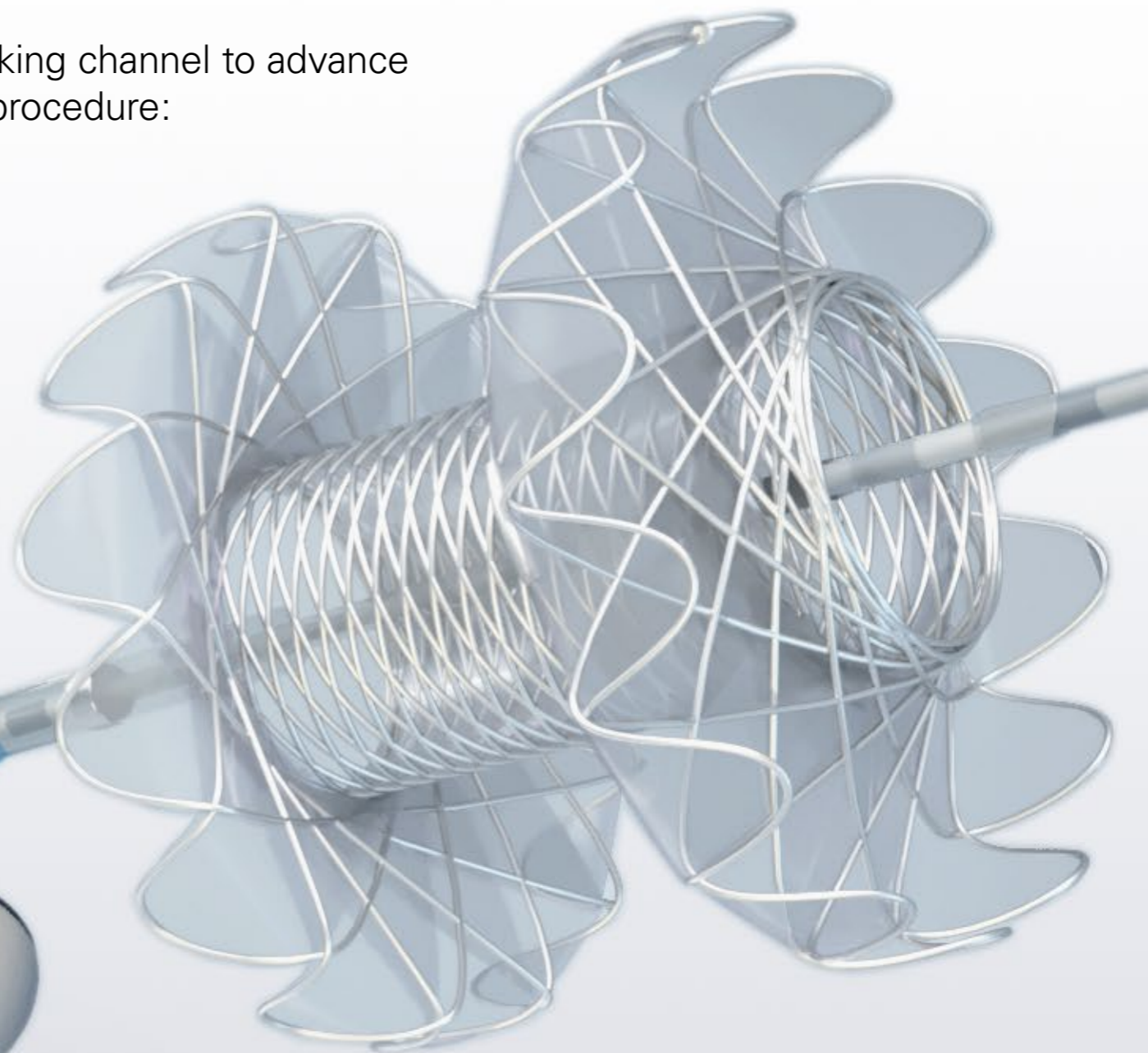


Optimized alignment of endoscopic view with ultrasound probe

A unique, enlarged 4.0 mm working channel



Redesigned elevator shape and optimal elevator movement



PENTAX Medical hygiene commitment

PENTAX Medical is using innovative products, optimizing processes, and integrating feedback from the market to directly tackle patient safety and infection prevention. We work closely with experts for market insights to ensure that all products are directly based on this need.

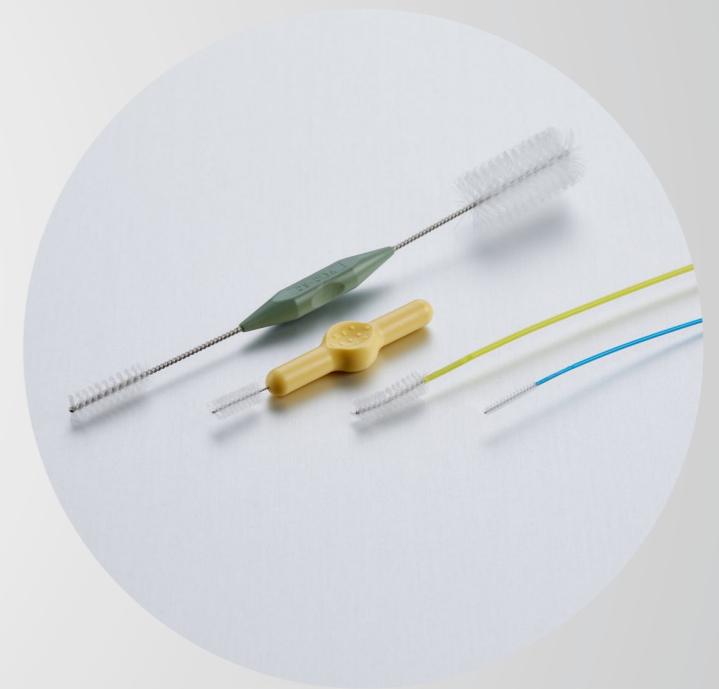
The EUS-J10 line-up aims to reduce the risk of cross-contamination through endoscope design, validated consumables and optimized reprocessing:



- Fewer reprocessing steps** due to:
- Sealed elevator wire channel
 - Optimized elevator mechanism design



- Newly designed **cleaning adapters** separating channels to ensure all channels are adequately reprocessed



- Dedicated **PROFILE single-use cleaning brushes** designed and validated to meet PENTAX Medical's quality standards
- Brushable balloon suction channel



Explore the EUS-J10 line-up: The complete solution.

Noblus –
Advanced versatile
ultrasound system



Noblus

OPTIVISTA plus –
Further improved
in vivo diagnosis for
therapeutic guidance



OPTIVISTA plus+
EPK-i7010

ARIETTA V60 –
The next generation of
the compact mid-range
systems



ARIETTA V60

EPK-i5000
video processor –
Operate i-scan quickly
and comfortably



EPK-i5000



ARIETTA V70 –
The next generation of
high-end ultrasound
systems



ARIETTA V70

DEFINA system –
Flexibility in a new light



DEFINA
EPK-3000

ARIETTA 850 –
The next evolution in
ultrasound, designed for
high expectations



ARIETTA 850

Click for more information >

Click for more information >



For more details on the combinations allowed in your country, please check the IFU of the ultrasound endoscopes.

Noblus, ARIETTA V70, ARIETTA V60, ARIETTA 850 and its transducers, in Europe are exclusively sold by Hitachi Medical Systems Europe Holding AG, Zug, Switzerland and its subsidiaries and sales partners. Noblus, ARIETTA V70, ARIETTA V60, ARIETTA 850, RTE are registered trademarks or trademarks of Hitachi Ltd., Tokyo, Japan.

Complementary Hitachi ultrasound transducers

PENTAX
MEDICAL

Wide range of ultrasound transducers extends
the application for complementary imaging



Hitachi Ultrasound Transducers

Hitachi's wide range of ultrasound transducers extend the application of gastro-intestinal ultrasound functionality, in particular:

- 360° Radial probe and biplane convex-linear endocavity probes for evaluation of anal sphincter complex, rectal wall tumor staging and pre-surgery planning
- Conventional abdominal and specialist biopsy probes for trans-abdominal ultrasound with possibility to perform complex interventional procedures (e.g. biopsies, drainage, ablation etc.)
- Linear probe for bowel wall assessment, and differential diagnosis in Crohn's disease
- Additional probes including intra-operative probes, complete the clinical application of the ultrasound platform even further



Overview details

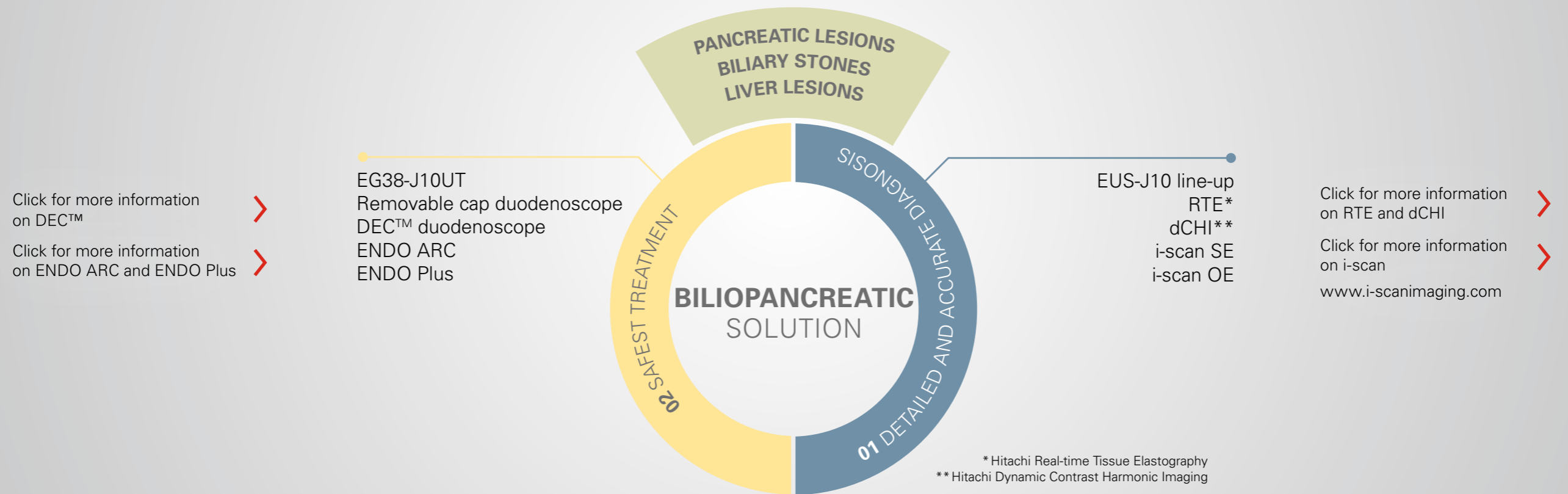


Ultrasound Video Gastroscopes	EG36-J10UR	EG34-J10U	EG38-J10UT
Direction of view	Forward	Forward oblique (45°)	Forward oblique (45°)
Field of view [°]	140	120	120
Depth of field [mm]	3–100	3–100	3–100
Tip angulation up/down [°]	150/70	160/130	160/130
Tip angulation right/left [°]	70/70	120/120	120/120
Distal end width [mm]	10.4	12.9	14.3
Insertion tube width [mm]	12.1	11.6	12.8
Minimum instrument channel width [mm]	2.4	2.8	4.0
Insertion portion working length [mm]	1,250	1,250	1,250
Total length [mm]	1,566	1,566	1,566
Frequency [MHz]	5–13	5–13	5–13
Scan method	Radial	Convex	Convex
Scan angle [°]	360	150	150

In the interest of technical progress, specifications may change without notice.

Biliopancreatic solution

The PENTAX Medical Ultrasound Video Gastroscope EUS-J10 line-up in combination with Hitachi ultrasound systems completes our biliopancreatic solution.

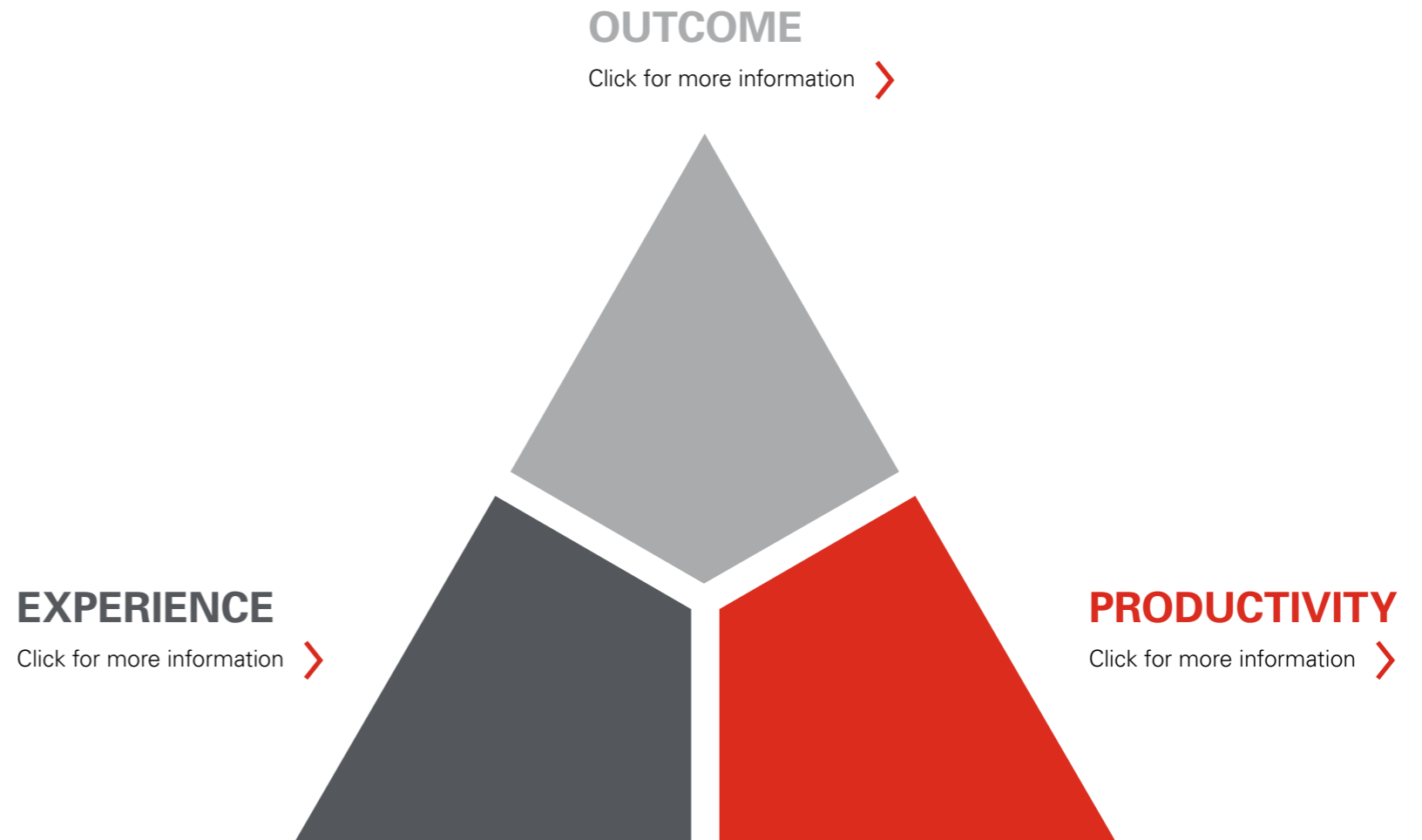


Find out more about our complete solutions offering >

PENTAX Medical's Triple Aim

Our **Triple Aim** program is designed to deliver on our commitment to support you and your healthcare organisation's wider objectives by providing programs, products and solutions to help you reach your goals.

FIND OUT HOW
THE EUS-J10
LINE-UP
SUPPORTS
TRIPLE AIM



PENTAX Medical's Triple Aim

Our **Triple Aim** program is designed to deliver on our commitment to support you and your healthcare organisation's wider objectives by providing programs, products and solutions to help you reach your goals.

FIND OUT HOW
THE EUS-J10
LINE-UP
SUPPORTS
TRIPLE AIM

Improving your **clinical outcomes** by offering solutions for the most common diseases and supporting clinicians throughout the clinical pathway, from diagnosis through to therapy.

EXPERIENCE

Click for more information >

PRODUCTIVITY

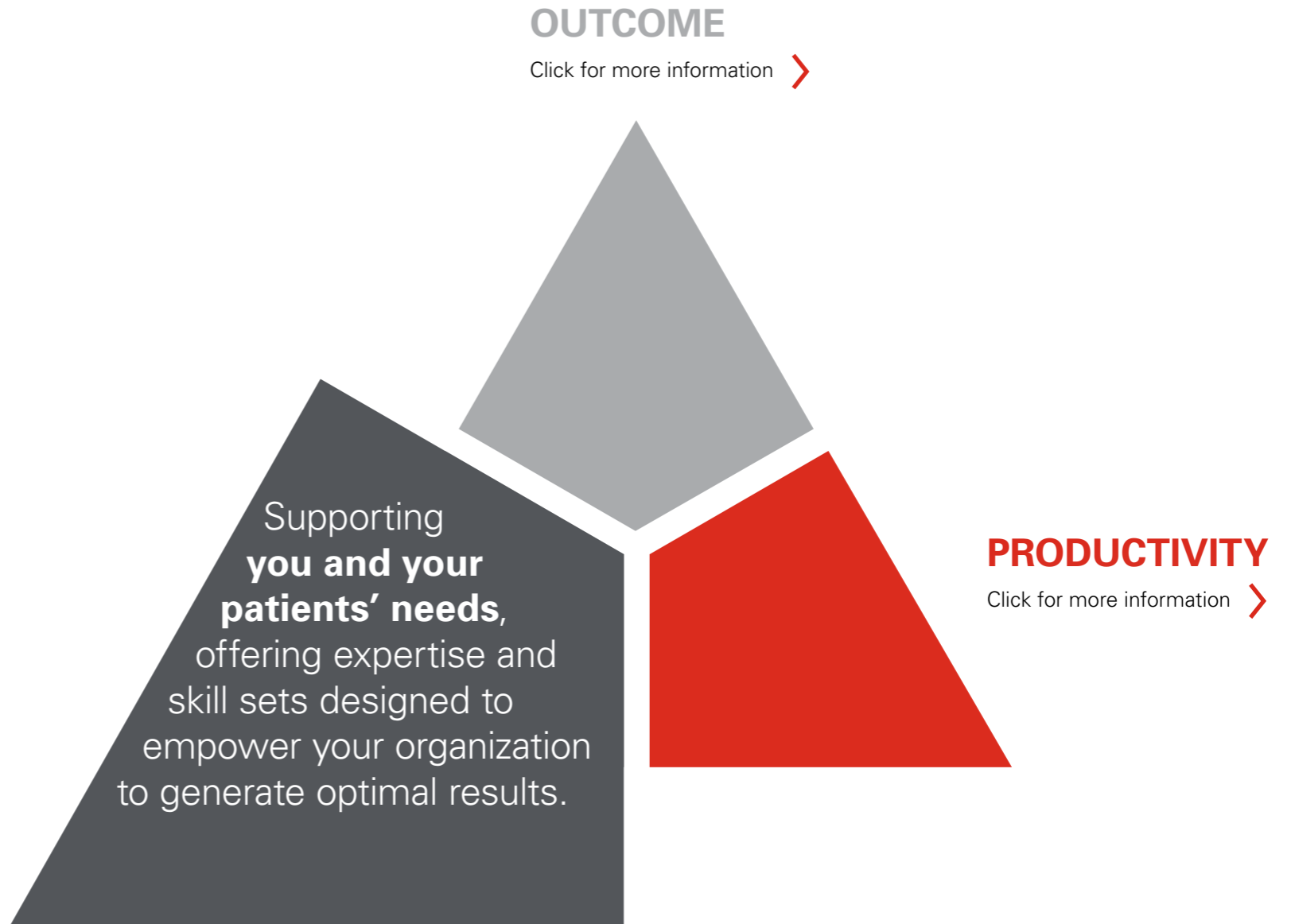
Click for more information >



PENTAX Medical's Triple Aim

Our **Triple Aim** program is designed to deliver on our commitment to support you and your healthcare organisation's wider objectives by providing programs, products and solutions to help you reach your goals.

FIND OUT HOW
THE EUS-J10
LINE-UP
SUPPORTS
TRIPLE AIM



PENTAX Medical's Triple Aim

Our **Triple Aim** program is designed to deliver on our commitment to support you and your healthcare organisation's wider objectives by providing programs, products and solutions to help you reach your goals.

FIND OUT HOW
THE EUS-J10
LINE-UP
SUPPORTS
TRIPLE AIM

OUTCOME

Click for more information >

EXPERIENCE

Click for more information >

Improving your **healthcare productivity** through technical reliability, support, and advice which enables your departments to operate effectively and efficiently.

Click for more information >

Your needs shape our service

YOUR REQUIREMENT
Guaranteed clinical outcomes

OUR PROMISE
Smoothly running operations and multilevel expertise

150+
Technicians across Europe

Regional and local repair centers
Service engineers for maintenance

360
Days a year repair center

43
Service Partner and Certified repair center

Original spare parts

YOUR REQUIREMENT
Increased productivity

OUR PROMISE
Transparency and predictability

2000+
Up to date loaner fleet

Service KPI reports

Flexible contract options

Centrally – located spare parts warehouses

YOUR REQUIREMENT
Optimized customer experience

OUR PROMISE
Personalized support and proximity

Hygiene solutions and personalized support

24/7
Information available and online traceability

On-site training with application specialists

Multilingual customer service

For PENTAX Medical Service, our partnership means your success.

**EC REP EMEA Headquarter
Germany**

PENTAX Europe GmbH

Julius-Vosseler-Straße 104 . 22527 Hamburg

Tel.: +49 40 / 5 61 92 - 0 . Fax: +49 40 / 5 60 42 13

E-mail: info.emea@pentaxmedical.com

www.pentaxmedical.com

TÜV Süd CE0123 • Medical device class: IIa • This product must be used only by healthcare professionals. Before use and for detailed product specifications, please refer to the instructions for use. In the interest of technical process, specifications may change without notice.

In association with:

HITACHI
Inspire the Next

PENTAX
MEDICAL
Excellence in Focus