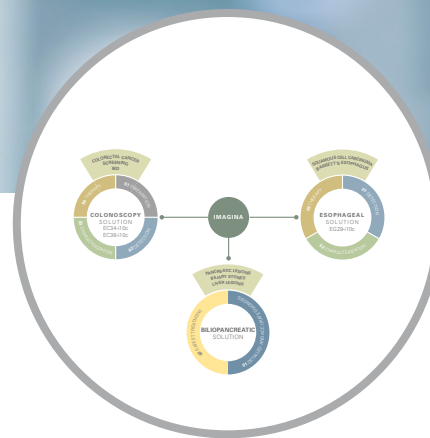


Made for you: the **IMAGINA**
Your choice for daily practices



Triple Aim



IMAGINA Clinical Solution

Made for you: the **IMAGINA**
Your choice for daily practices



Developed by directly integrating feedback from physicians worldwide, the IMAGINA platform was made for your daily diagnostic and therapeutic needs. The platform is completed by three new endoscopes – one video gastroscope and two video colonoscopes.



IMAGINA Video Processor >

Video Gastroscope >

Video Colonoscopes >

Complete Solution >



Made for you: the **IMAGINA platform**

PENTAX Medical always has Triple Aim in mind when providing solutions to you, in order to support your goals of improving clinical outcomes, improving healthcare productivity and enhancing provider and patient experience.

Improved diagnostic outcome

IMAGINA supports each step of the clinical pathway, from screening to diagnosis towards day-to-day therapy, with state of the art HD image quality powered by i-scan.

Click for more information



Cost efficient, reliable and safe

With its innovative technology IMAGINA reduces **running and investment costs** due to latest LED illumination. The PENTAX Medical heat-control mechanism **avoids uncontrolled heating of the distal** tip to address safety concerns.

Click for more information



Improved workflow efficiency

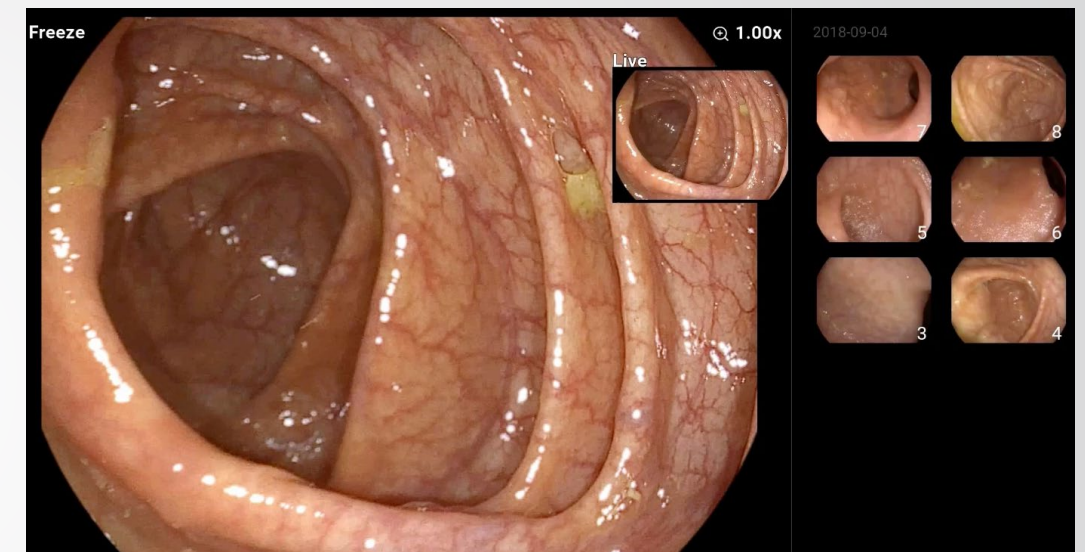
Unconventional design, integration and connectivity. A user-friendly and intuitive platform with a customizable menu for procedure optimization, on-screen image collection and patient documentation.

Click for more information



Improved diagnostic outcome

IMAGINA supports each step of the clinical pathway, from screening to diagnosis towards day-to-day therapy, with state of the art HD image quality powered by i-scan.



i-scan for enhanced detection and characterization

i-scan provides the physician with an enhanced view of the mucosal structures and vascular patterns, supporting early detection, demarcation and characterisation.

HD+ together with i-scan, has been proven to increase adenoma detection rate, meeting the quality measurement standards

State of the art HD image quality
Brilliant LED illumination



Support your diagnosis with proven classifications

Colorectal Polyps (SIMPLE classification)

Development and validation of the SIMPLE endoscopic classification of diminutive and small colorectal polyps. With i-scan OE

[Read more \(i-scan OE\)](#)

ZEEBO (Barrett's esophagus)

Systematic assessment with i-scan magnification endoscopy and acetic acid improves dysplasia detection in patients with Barrett's esophagus.

[Read more \(i-scan\)](#)[Read more \(i-scan OE\)](#)

PICASSO (ulcerative colitis)

Development and reliability of the new endoscopic virtual chromoendoscopy score: the PICaSSO (Paddington International Virtual ChromoendoScopy ScOre) in ulcerative colitis.

[Read more \(i-scan\)](#)

Cost efficient, reliable and safe



With its innovative technology IMAGINA reduces running and investment costs due to latest LED illumination.



Find out how much running costs you can save. >



Cost efficient, reliable and safe

The PENTAX Medical heat-control mechanism avoids uncontrolled heating of the distal tip to address safety concerns.



LEDs at the distal tip with PENTAX Medical heat control mechanism to avoid uncontrolled distal end heating and potential damage to the mucosa



Improved workflow efficiency

Unconventional design, integration and connectivity. A user-friendly and intuitive platform with a customizable menu for procedure optimization, on-screen image collection and patient documentation.



Integration and connectivity with hospital IT

Clear visualisation of settings and simplified adjustment during procedures

Internal image capture system for simple management of patient still image and video files

Instant review of all files possible on processor tablet screen or main endoscopy monitor screen



Made for you: the **IMAGINA Endoscope Line-up**

Safer procedure with heat control mechanism

- Prevents overheating of the distal tip and potential damage to the mucosa.
- Temperature controlled LED illumination delivers brighter, clearer images during procedures.

Click for more information >

Expand your diagnostic & therapeutic capabilities

- Improved therapeutic performance with optimised endoscope and working channel outer diameter ratio.
- Proven PENTAX waterjet technology assists to maintain a clean, clear operating field.

Click for more information >

Smarter procedure flow

- One-handed connection and easier endoscope handling with new small, lightweight connector.
- Watertight connector without soaking cap reduces risk of endoscope flooding.

Click for more information >



Expand your diagnostic & therapeutic capabilities

i-FLEX™ for
graduated flexibility
of the insertion tube

Find out more with our video [>](#)

F2 Endoscopes with
increased rigidity

TrueTorque™ 1to1
transfer torque from
proximal to distal portion

Find out more with our video [>](#)

Improved therapeutic
performance with optimised
endoscope and working
channel outer diameter ratio

PENTAX Medical heat
control mechanism prevents
overheating of the distal tip
and potential damage to the
mucosa



Smarter procedure flow

Single hand operated connector and easier endoscope handling with new small, lightweight connector

Watertight connector without soaking cap reduces risk of endoscope flooding



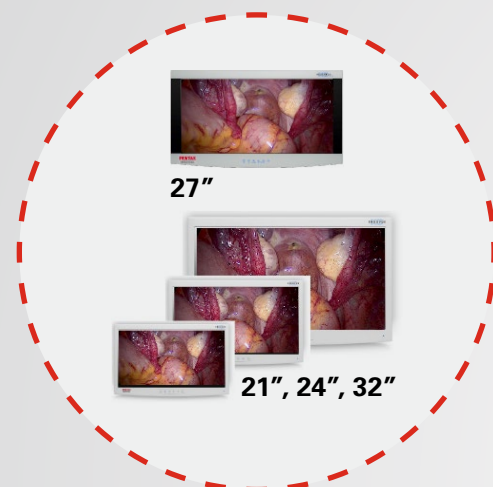
Weight reduced endoscopes
for better handling

Ergonomic control body



Made for you: the **IMAGINA** complete solution

PENTAX Medical HD Monitors



ENDO ARC and ENDO Plus



Click for more information >

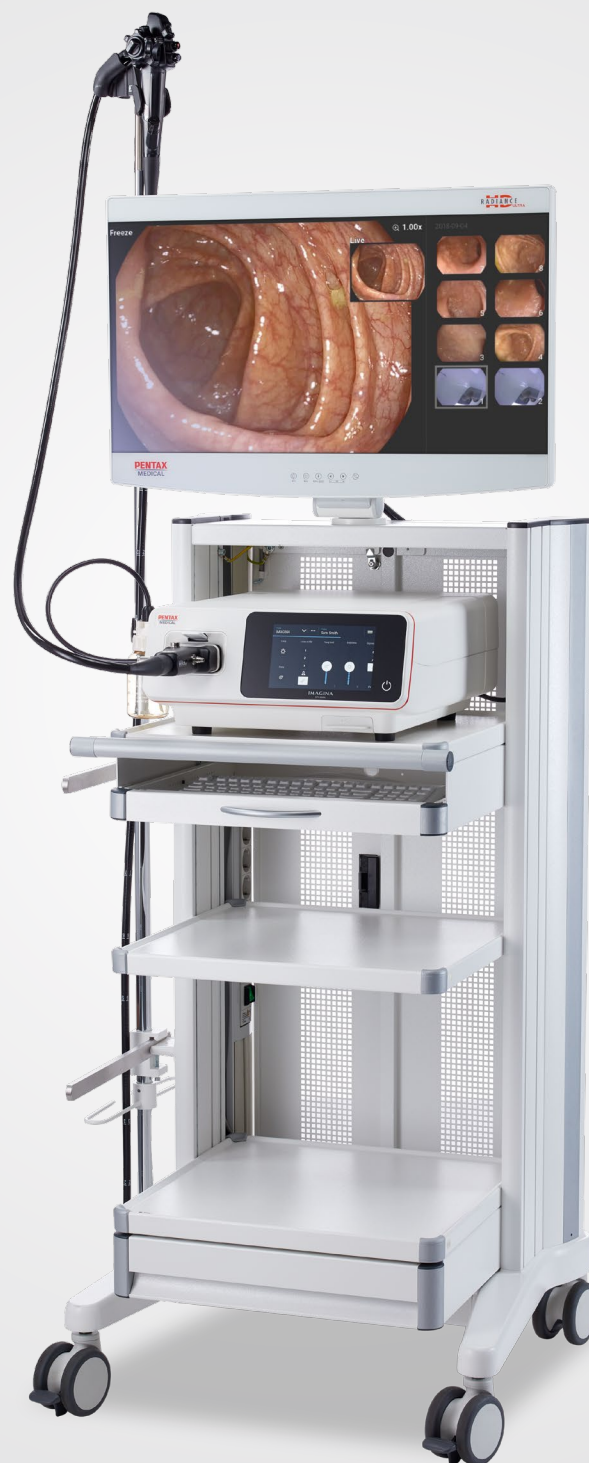
CO2, Irrigation and Suction pump



ESD Accessories



Click for more information >



Made for you: the **IMAGINA**



IMAGINA Video Processor	EPK-i5500c
Video output	1080P (16:9) / SXGA (5:4) / XGA (4:3)
User interface	7 inch customizable, smartphone-like touchscreen , TwinMode
i-scan, virtual chromoendoscopy	Digital image enhancement (SE, CE, TE)
Video and audio recording	Integrated function, external USB storage device
Light Source	LED
Dimensions [W x H x D/weight]	380 x 155 x 420 mm/13 kg
D-Range expansion	Yes
Freeze scan	Yes
Digital zoom	Up to x2.0
Display languages	15 languages: English, Spanish, Swedish, French, German, Italian, Norwegian, Finnish, Danish, Dutch, Polish, Portuguese, Russian, Slovenian & Japanese



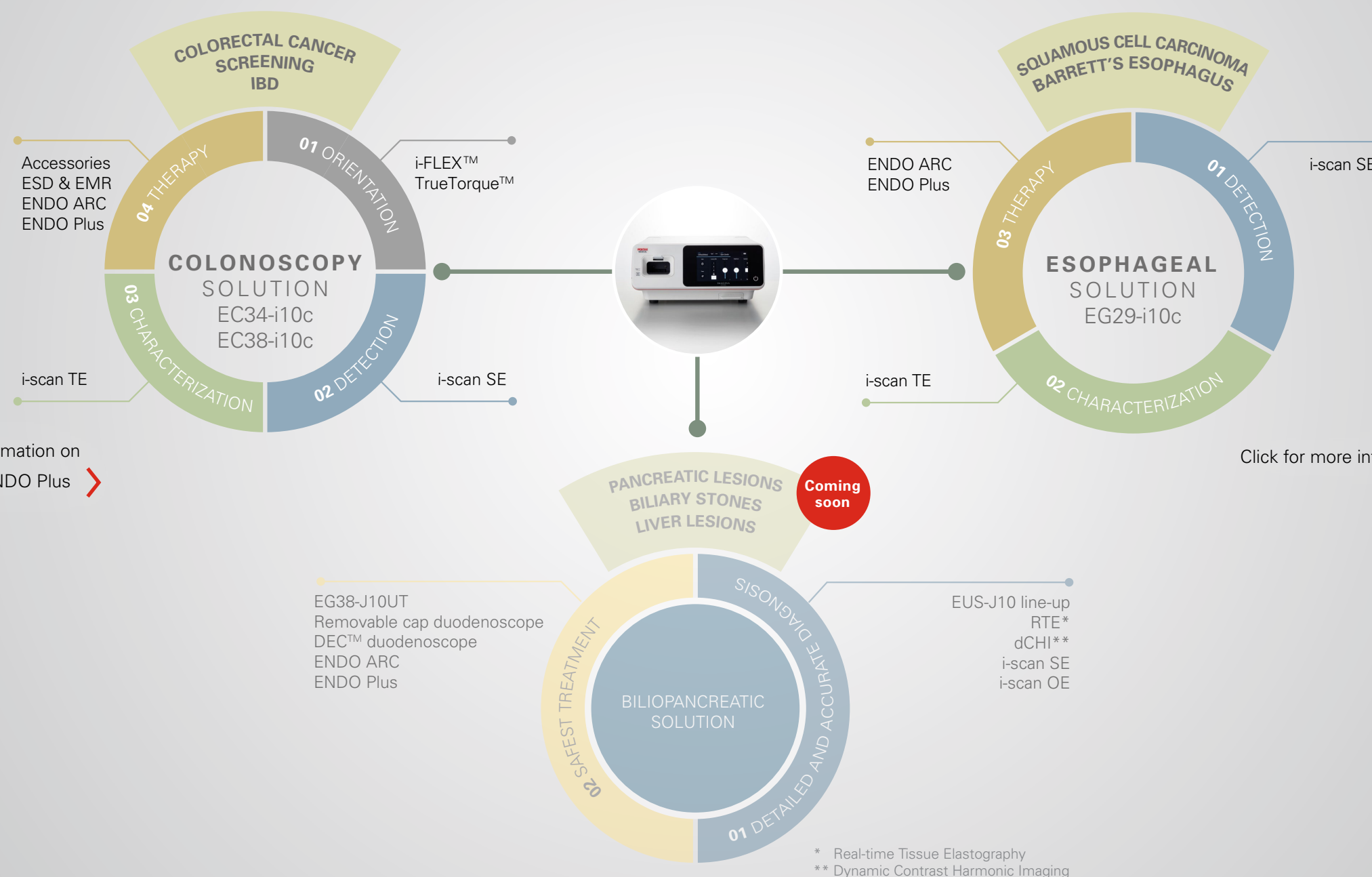
Made for you: the **IMAGINA LED Endoscopes Line-up**
EG29-i10c | EC34-i10c | EC38-i10c



Video Endoscopes	EG29-i10c	EC34-i10c	EC38-i10c
Field of view [°]		140	
Depth of field [mm]		3–100	
Tip angulation up–down [°]	210–120		180–180
Tip angulation right–left [°]	120–120		160–160
Insertion tube diameter [mm]	9.8	11.6	13.2
Min. instrument channel diameter [mm]	3.2		3.8
Working length [mm]	1.050		1,300/1,500/1,700

Colonoscopy and esophageal solution

The new IMAGINA processor in combination with its set of endoscopes supports our colonoscopy and esophageal solutions.



Click for more information on
ENDO ARC and ENDO Plus >

Click for more information on i-scan >



Find out more about our complete solutions offering >

PENTAX Medical's Triple Aim

Our **Triple Aim** program is designed to deliver on our commitment to supporting you and your healthcare organisation's wider objectives providing programs, products and solutions to help you to improve against your goals.

FIND OUT
HOW
IMAGINA
SUPPORTS
TRIPLE AIM

OUTCOME

Click for more information >

EXPERIENCE

Click for more information >

PRODUCTIVITY

Click for more information >

PENTAX Medical's Triple Aim

Our **Triple Aim** program is designed to deliver on our commitment to supporting you and your healthcare organisation's wider objectives providing programs, products and solutions to help you to improve against your goals.

FIND OUT
HOW
IMAGINA
SUPPORTS
TRIPLE AIM



EXPERIENCE

Click for more information >

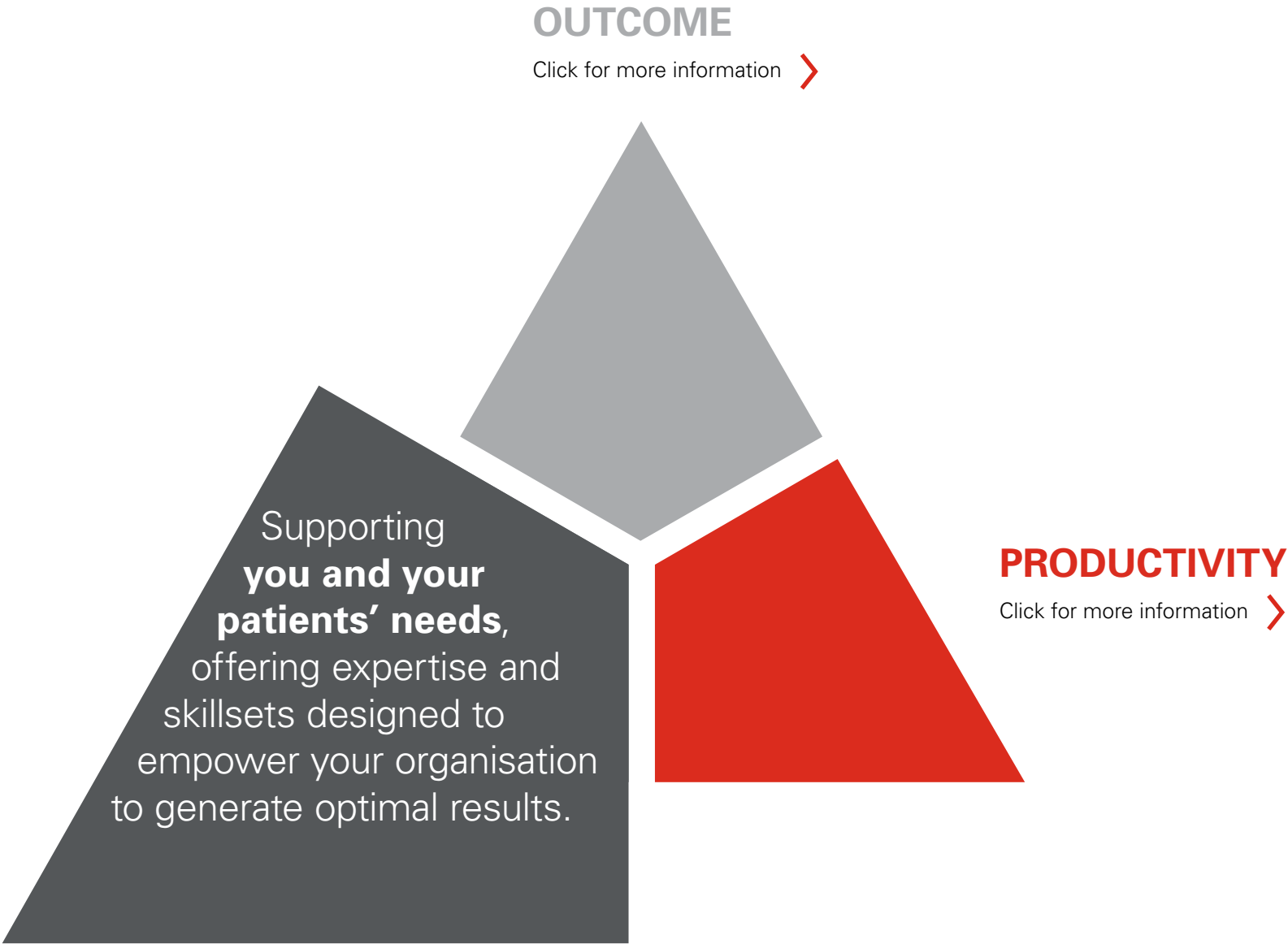
PRODUCTIVITY

Click for more information >

PENTAX Medical's Triple Aim

Our **Triple Aim** program is designed to deliver on our commitment to supporting you and your healthcare organisation's wider objectives providing programs, products and solutions to help you to improve against your goals.

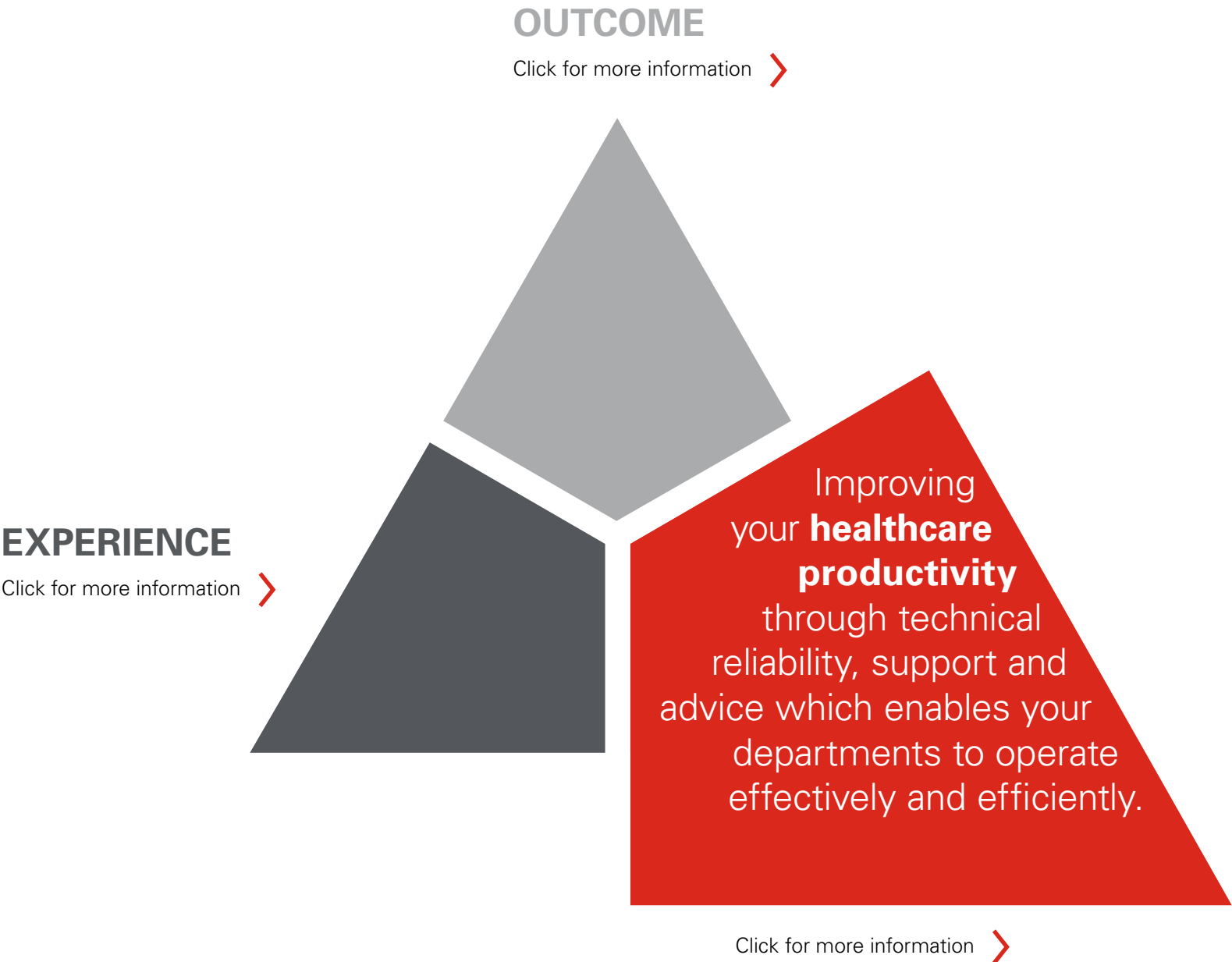
FIND OUT
HOW
IMAGINA
SUPPORTS
TRIPLE AIM



PENTAX Medical's Triple Aim

Our **Triple Aim** program is designed to deliver on our commitment to supporting you and your healthcare organisation's wider objectives providing programs, products and solutions to help you to improve against your goals.

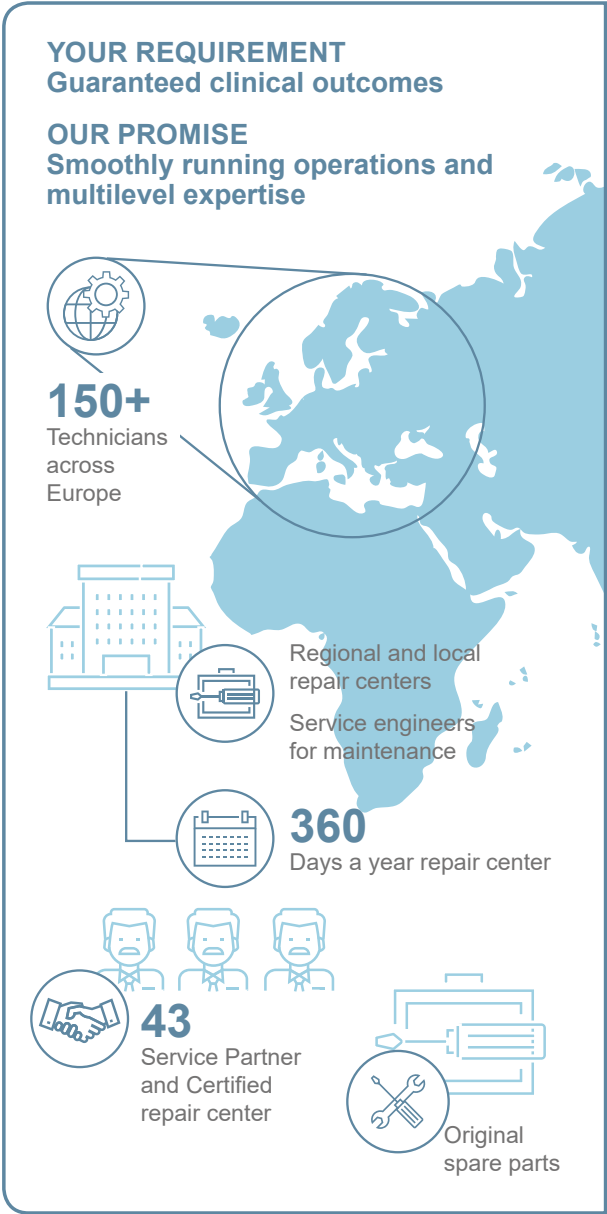
FIND OUT
HOW
IMAGINA
SUPPORTS
TRIPLE AIM



Your needs shape our service

YOUR REQUIREMENT
Guaranteed clinical outcomes

OUR PROMISE
Smoothly running operations and multilevel expertise



This infographic features a light blue background with a map of Europe. It includes icons for a globe with a gear, a building, a calendar, people, and a toolbox. The text is in blue and black.

150+
Technicians across Europe

Regional and local repair centers
Service engineers for maintenance

360
Days a year repair center

43
Service Partner and Certified repair center

Original spare parts

YOUR REQUIREMENT
Increased productivity

OUR PROMISE
Transparency and predictability



This infographic has a red background with white icons. It includes icons for a stack of money, a hand holding a coin, a document with a star, and a location pin. The text is in red and black.

2000+
Up to date loaner fleet

Service KPI reports

Flexible contract options

Centrally – located spare parts warehouses

YOUR REQUIREMENT
Optimized customer experience

OUR PROMISE
Personalized support and proximity



This infographic has a light gray background with white icons. It includes icons for a hand holding a cross, a smartphone, a clock, a person with a headset, and a group of people. The text is in gray and black.

Hygiene solutions and personalized support

24/7
Information available and online traceability

On-site training with application specialists

Multilingual customer service

For PENTAX Medical Service, our partnership means your success.